

DONGAR[®]

PRO+

**THE MOST ADVANCED DASH CAM
POWER MANAGER *EVER***



CABLE PACK: PROS-01

TABLE OF CONTENTS

Overview	1
What's Included	2
Basic Operation	3
Basic Operation: Modes	4
Settings	5
Selecting Your Wiring Harness & Install Method	7
Installation Instructions	8
Dome Light Cavity	8
Rearview Mirror	9

OVERVIEW

An evolution of our PRO (the first-ever plug & play parking mode adapter), the **Dongar PRO Plus** is a premium plug & play power hub that converts your vehicle's rearview-mirror connection into a clean USB power source for dash cams and accessories – no cutting, no splicing, and no fuse taps.

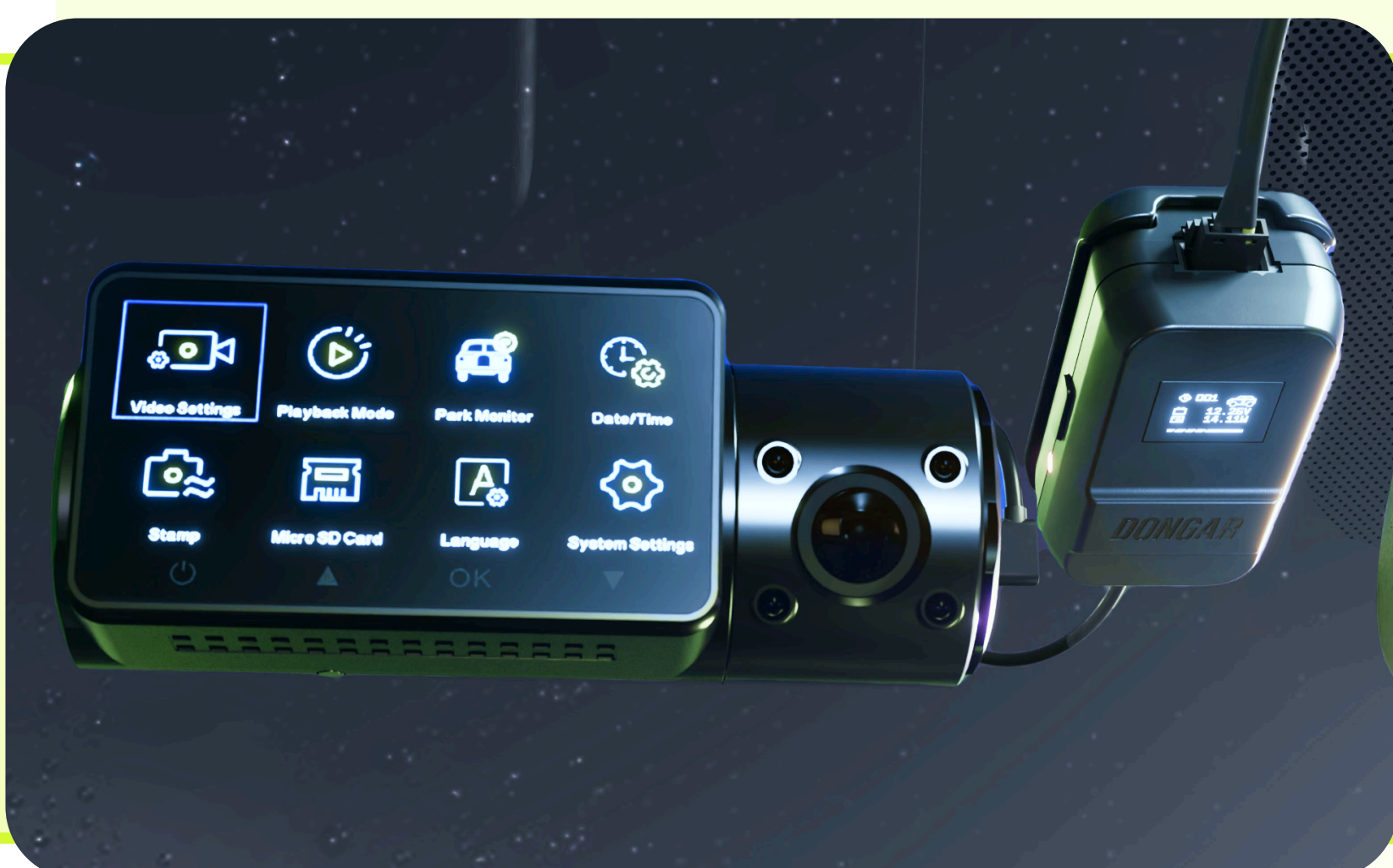
Featuring an intuitive one-button menu system and OLED display, it allows you to precisely customize voltage thresholds and timed modes to power your dash cam exactly how you want, when you want.

DONGAR PRO+

**THE MOST ADVANCED DASH CAM
POWER MANAGER EVER**

FULLY CUSTOMIZABLE PARKING MODE

Select from three power modes for your dash cam—ignition, timed, or continuous—and customize your timed mode to run for any amount of time after parking.



INTELLIGENT CUTOFF

Set your own low voltage threshold—even in continuous mode, your dash cam will shut down when the threshold is met in order to preserve your vehicle's battery.



BRIGHT 0.66" OLED DISPLAY WITH INTUITIVE ONE-BUTTON INTERFACE.



VIEW INPUT VOLTAGE AND POWER USAGE IN WATTS AND AMPS.



ADJUST SCREEN TIMEOUT AND BRIGHTNESS TO MATCH YOUR SETUP.



SAME 18 W USB-C OUTPUT AND OEM-GRADE RELIABILITY AS THE CLASSIC.



COMPACT, ADHESIVE-MOUNT ENCLOSURE FOR FLEXIBLE PLACEMENT.

WHAT'S INCLUDED

A - PRO+ USB MODULE

Transfers power from your wiring harness to your dash cam. Compatible with all USB devices via included cable (Item B).



B - SHORT USB-C CABLE

Connects your dash cam to the PRO+ USB Module (Item A).



C - WIRING HARNESSSES (3)

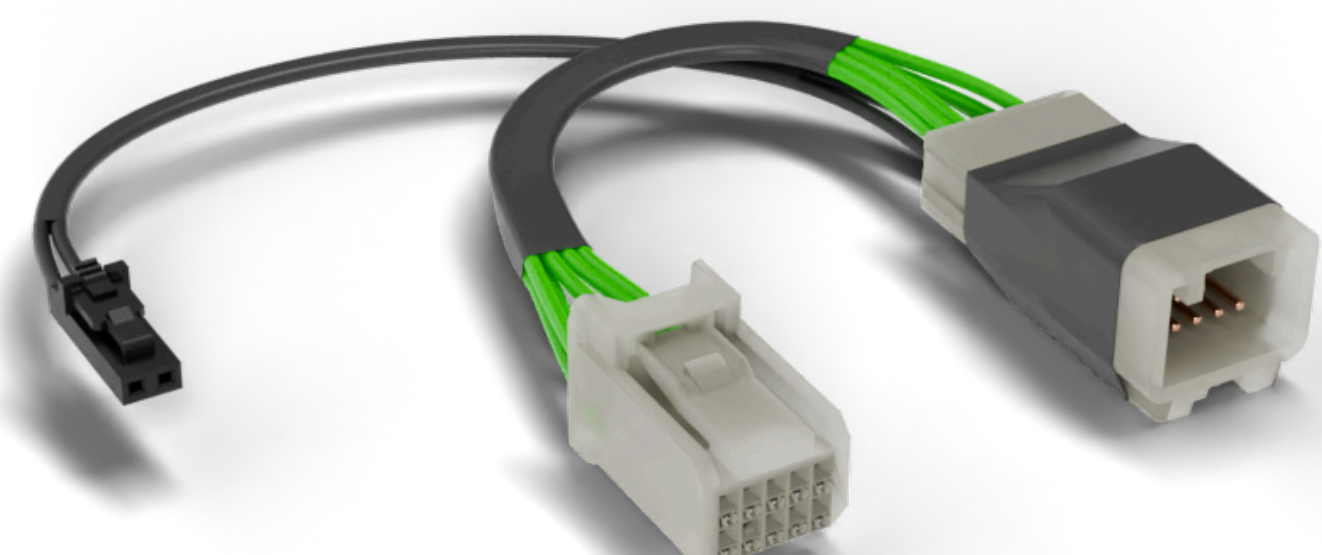
Transfers power from your vehicle to the PRO+ USB Module, then to your dash cam—all while preserving OEM functions.

You will only need to use one (1) of the wiring harnesses. To confirm which to use, **see page 7**.



Harnesses 5A and 5C (Labeled accordingly)*

The included 5-Pin harnesses are for dome light cavity installation only. They can be used in newer models of the Camry, Tacoma, Land Cruiser, 4Runner, Sienna, Sequoia, & BZ4X.



Harness 10B

The included 10-Pin harness is for rearview mirror installation only. It can be used in newer models of Toyota and Lexus.

***Please Note:**

The 5A and 5C harnesses are nearly identical and are labeled to help you determine which to use: *Harness 5A* is labeled “**3-pin Harness 5A**” and *Harness 5C* is labeled “**3-pin Harness 5B**.”

BASIC OPERATION

User Interaction

The Pro Plus features an intuitive interface operation using a single button, *a.k.a. the 'action' button*:

- **Tap (short-press)** → Toggle through menu items
- **Press and hold (long-press)** → Enter a menu or confirm an option

Home Screen

You can see what voltage the Pro Plus is supplying to your device by consulting the LED status light and OLED screen on the adapter.

The home screen displays output voltage, output watt or amperage, and time elapsed. The top line will show the voltage output, while the bottom line will show power consumption or amperage.

From the home screen, short-press the action button to toggle an alternate display showing just voltage and amperage in a larger font.

Entering the Menu

From the home screen, press and hold the action button to enter the Menu to access **'Settings'**, **'Display'**, and **'About'** menus.

QUICK GUIDE:

- *Press and hold* the action button to enter the **Menu**.
- *Short-press, or "tap"* to toggle through the **Menu items**.



SETTINGS

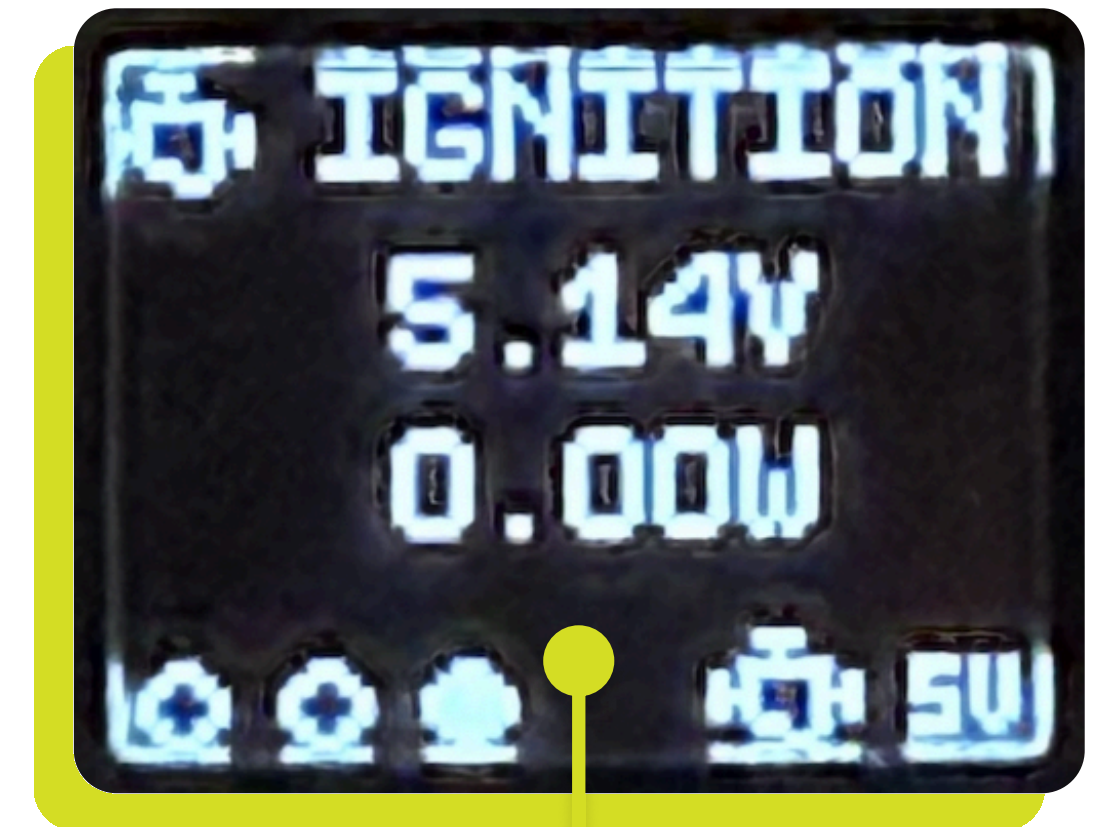
→ Settings

5V OUTPUT ALWAYS-ON:

This setting allows the management device to always output 5V to the USB-C port, bypassing the negotiation 'handshake' typically required by USB-C devices to allow dynamic voltage output. 'No' means the management device will allow 5V, 9V, or 12V output.

User can select one of following:

- **Yes**
- **No [Default]**



5V MODE ON

PARKING MODE CC (CONFIGURATION CONTROL):

REQUIRES '5V OUTPUT ALWAYS-ON' = YES (SEE ABOVE)

- **[YES]** setting allows the Dongar management device to always output 5V to the USB-C port, bypassing the negotiation 'handshake' typically required by USB-C devices to allow dynamic voltage output.
- **[NO]** setting means the device will allow 5V, 9V, or 12V output.

VOLTAGE CUTOFF:

This setting determines what voltage level your device will allow before shutting off to protect your vehicle's battery via digit editing with 0.01V resolution:

- Examples: 11.80V [Default], 11.81V, 12.81V



ADJUSTING VOLTAGE CUTOFF AND TIMER DURATION:

1. Tap action button to scroll through digits left to right.
2. Over the desired digit, hold action button until outline appears.
3. Tap action button to change digit.
4. Hold action button to save.

TIMER DURATION:

This setting adjusts the timer duration used in the *Timed* mode described on **page 4**. Adjust via digit editing with hour and minute increments:

- Examples: 8:00 [Default], 12:01 (twelve hours + one minute)

ENERGY BUDGET:

Choose between 'Eco', 'Normal', or 'Heavy'.

FACTORY RESET:

Revert to original factory settings indicated by [Default] above.

BASIC OPERATION: MODES

→ MODES

Enter the MODES menu to select the behavior of the USB-C device.

- **Ignition:** Power will only be supplied to the dash cam when the vehicle ignition is on.
- **Timed:** After the vehicle is turned off, the dash cam will remain powered for the duration of the timer OR until the Dongar device detects that the input voltage has dropped below the Voltage Cutoff threshold. Configure timer duration in the settings menu.
- **Infinity (Voltage Cutoff only):** After the vehicle is turned off, the dash cam will remain powered until input voltage drops below the Voltage Cutoff threshold. Configure voltage cutoff in the settings menu.
- **Energy Budget:** After the vehicle is turned off, the dash cam will remain powered until the chosen budget energy has been used by the camera, or until the voltage cutoff threshold is met. Configure energy budget in the settings menu.

ABOUT PARKING MODES:

After you park, PRO+ will keep your dash cam on (and car battery safe!) using the Timed, Infinity, or Energy Budget modes above.

Your dash cam will continue to receive power as if the vehicle is still running. Some dash cams might enable power-saving features or enter sleep mode if no motion is detected. Consult with the dash cam user manual or contact Dongar Support for advice at dongar.tech/support.

*****FOR DASHCAMS WITH BUILT-IN PARKING MODES*****

Some dash cams (such as Viofo™ and RedTiger™) have *optional* built-in 'low-bitrate' (a.k.a. 'low-energy') parking modes designed to save power or memory card storage.

To enable this feature with PRO+, configure these two settings:

1. 5V OUTPUT ALWAYS-ON = YES
2. PARKING MODE = YES

Note: Your dash cam will stay in 5V output mode. If you wish to later plug in a 12V device (such as radar detector), change to 5V OUTPUT ALWAYS-ON=NO.

→ **Display**

UNITS:

Change the units on the primary display screen.
Choose from:

1. Output Volts and Amps *[Default]*
2. Output Volts and Watts
3. Input (Vehicle) and Output (USB-C) Voltage



OUTPUT DISPLAY:

When selecting options 1 or 2 above, you may choose to display the vehicle voltage or the dash cam voltage (i.e. input to the PRO+ or output over USB port).

Note: We recommend displaying the vehicle input voltage to monitor the vehicle battery. Dash cam voltage is useful for monitoring power stability of the device.

LED BRIGHTNESS:

Adjust the brightness of the side LED bulb, choose from:

- 100% *[Default]*
- 50%
- 25%
- Off

LED COLOR:

This changes the color of the status LED on the side of the Dongar device.

User selects a preset:

- **'5-9-12'** *[Default]*: LED color will change depending on output voltage
- **'Mode'**: LED color will change based on selected MODE.
 - Green: Energy Budget or Timed
 - Red: Infinity
- **'Red'** / **'Blue'** / **'Green'**: LED will illuminate this color only



SCREEN TIMEOUT:

Changes the OLED display shutoff behavior.

- Always On
- 1 Minutes
- 5 Minutes *[Default]*
- 10 Minutes
- 30 Minutes

SCREEN BRIGHTNESS:

Choose between **'Full'**, **'Bright'**, **'Normal'**, or **'Dim'**.

→ **About**

This section includes copyright and patent information, build date of the unit, and the unit's firmware version.



SELECTING YOUR WIRING HARNESS

<i>MODEL</i>	<i>YEAR</i>	<i>HARNESS</i>
Tacoma	2024+	Harness 5A Labeled "3-pin Harness 5A"
Tundra	2022+	
4Runner	2025+	
Land Cruiser	2024+	
Sequoia	2022+	
Sienna	2025+	
Lexus GX550	2024+	
Camry	2021+	Harness 5C Labeled "3-pin Harness 5B"
All other models with Homelink but not listed		Harness 10B

DETERMINING YOUR INSTALLATION METHOD

If your vehicle is compatible with ***Harness 5A or Harness 5C***, we recommend a dome light cavity installation, see **page 8**.

If your vehicle is only compatible with ***Harness 10B***, you will need a rearview mirror installation, see **page 9**.

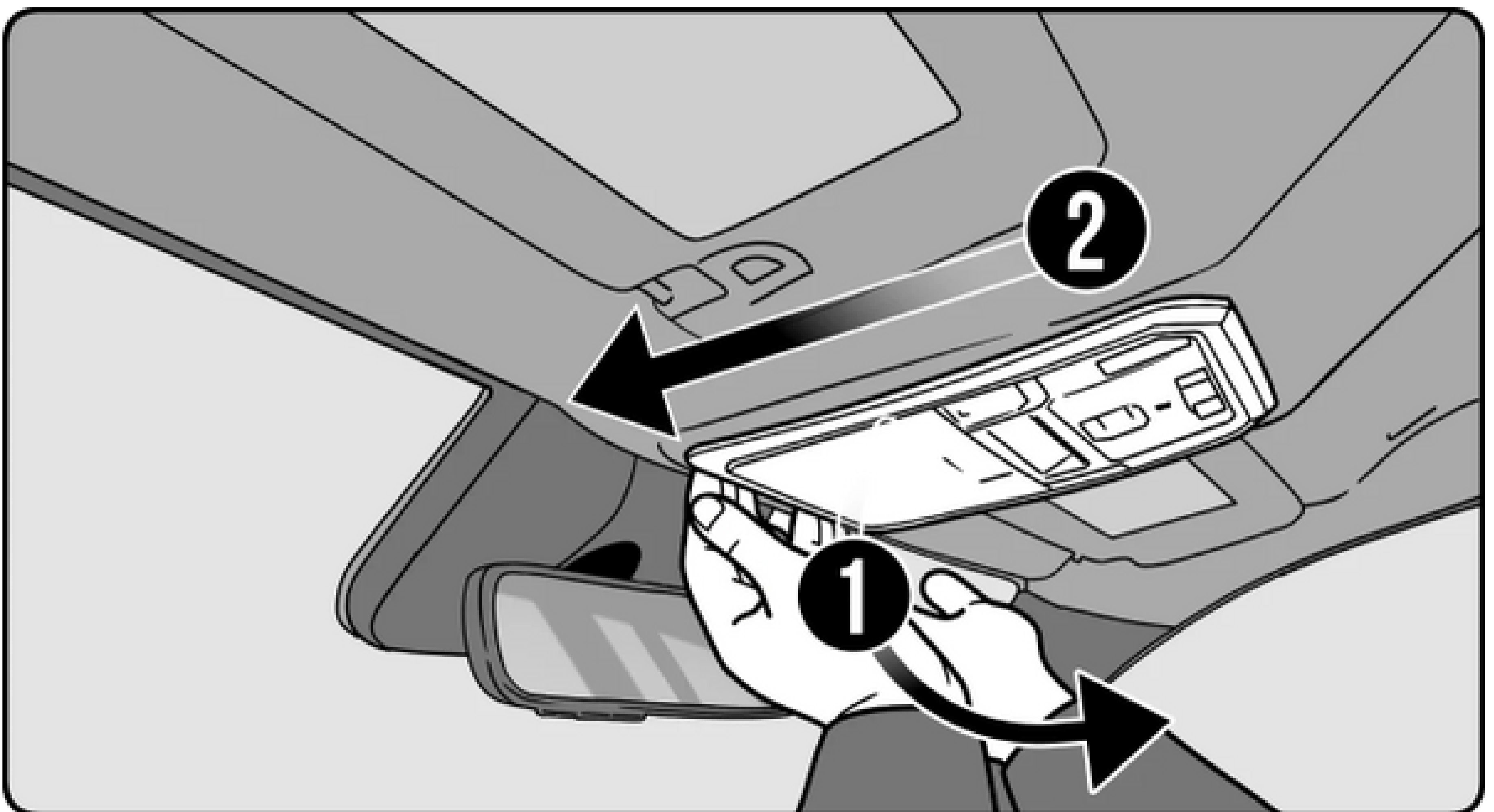
DOME LIGHT CAVITY INSTALLATION

BEFORE YOU BEGIN:

Always turn your vehicle [OFF] before beginning installation.

1. The dome light is located in the ceiling of the driver/passenger row toward the front of your vehicle.

Remove the dome light assembly by placing your fingers at the front of the assembly (closer to windshield) and gently pulling down.



2. Locate the 5-pin connector port within the dome light cavity and connect the wiring harness to it. Route the small 3-pin end of the same harness through the headliner.
3. Connect the 3-pin head to the Dongar PRO+ USB module and plug your dash cam into the USB-C port. Turn [ON] your vehicle and ensure the dash cam is receiving power.
4. Once you have confirmed the dash cam is receiving power, mount the dash cam and PRO+ adapter on a clean spot on the windshield and re-assemble the dome light assembly.

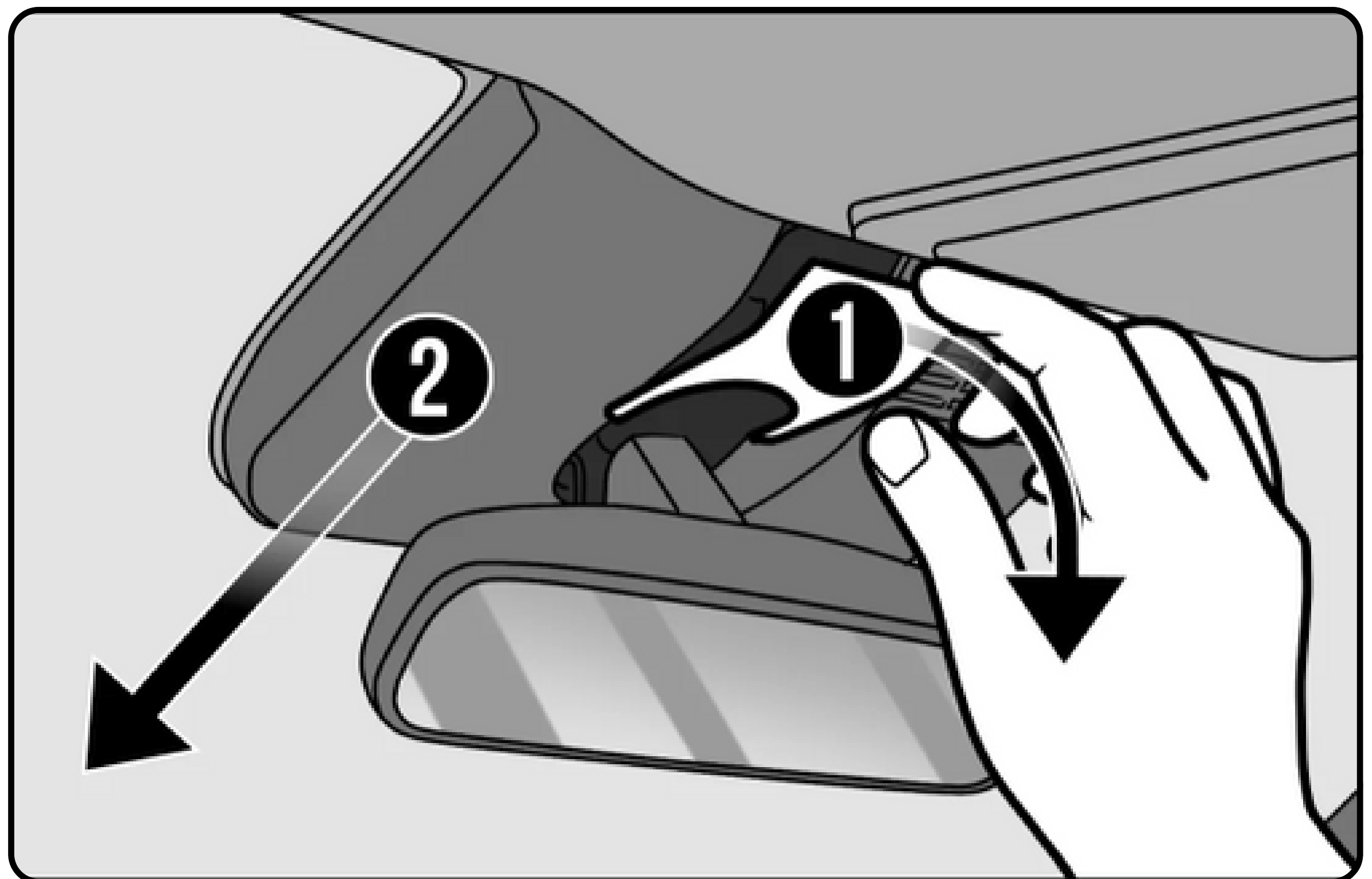
REARVIEW MIRROR INSTALLATION

BEFORE YOU BEGIN:

Always turn your vehicle [OFF] before beginning installation.

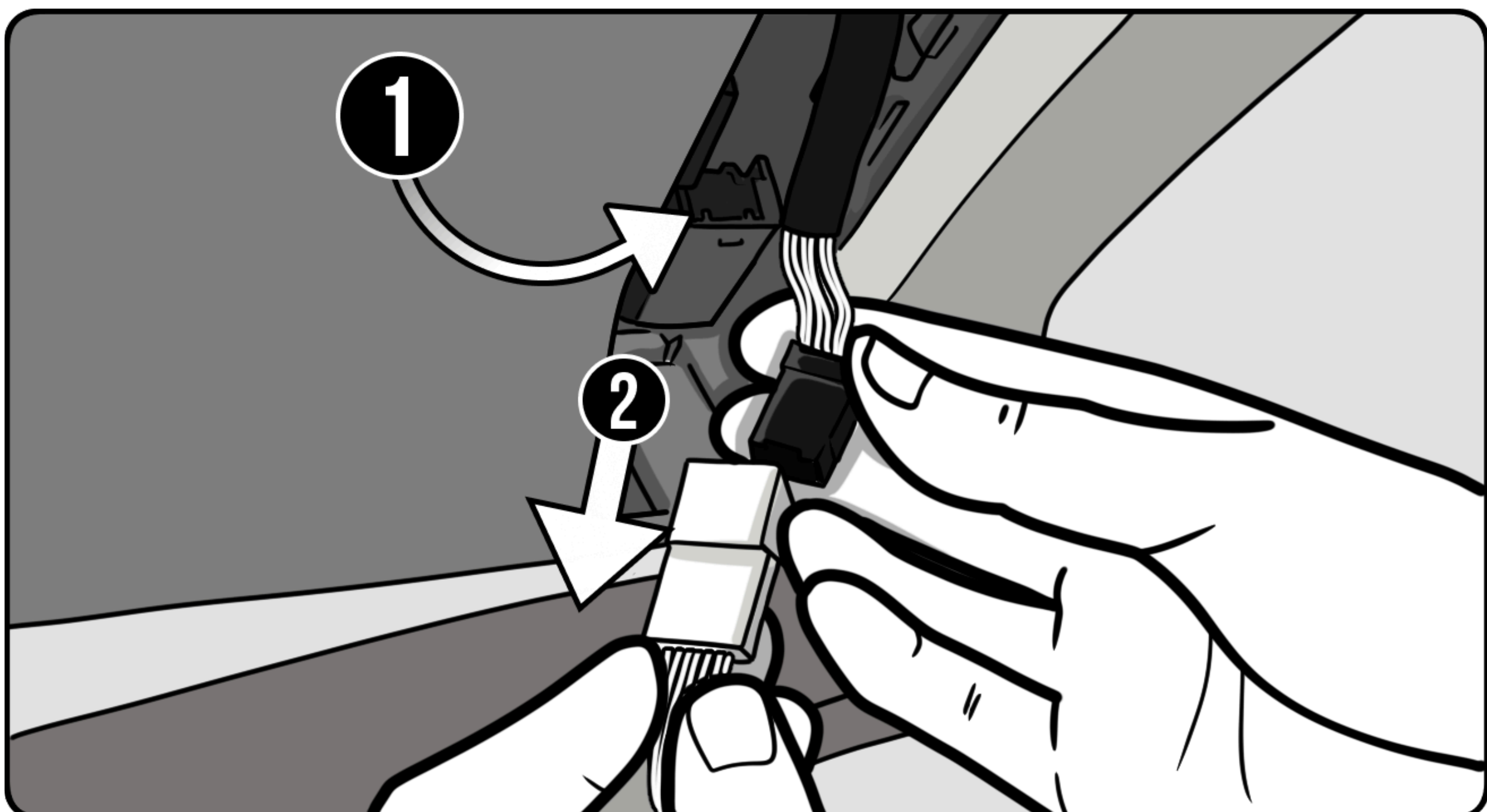
1. Tilt your mirror down for easier access to the shroud. To remove the shroud, place your fingers between the headliner and smaller panel piece and pull straight down.

The larger panel can be removed by sliding it down and away from you.



2. Locate and unclip the mirror's connector. Then, plug the matching male end of the wiring harness into the mirror's female port.

NOTE: Most Toyotas have a 12-Pin Safety Sense Connector that can easily be confused with your rearview mirror connection. **DO NOT UNPLUG THIS.** Instead, search for the additional 10-Pin connector under your plastic shroud.



3. Plug the male end of the original mirror connector into the female end of the wiring harness. Plug the smaller 3-pin head into the PRO+ USB module.
4. Connect your dash cam to the USB-C port on the PRO+ module. Turn [ON] your vehicle and ensure the dash cam is receiving power. Once you have confirmed the dash cam is receiving power, mount the dash cam and PRO+ adapter on a clean spot on the windshield.
5. Route the cables accordingly and re-assemble the plastic shroud.

**TO VIEW THESE INSTRUCTIONS ONLINE,
SCAN THE QR CODE**



If you need more help installing
your Dongar adapter, visit
dongar.tech/install

THREE-YEAR MANUFACTURER WARRANTY

We stand behind our products. If your item has a defect in materials or workmanship within three (3) years of purchase from an authorized dealer, we'll repair or replace it at no cost—just cover shipping and handling. Proof of purchase is required.