

DONGAR[®]



DONGAR

HARNESS 10B

STANDARD 3-YEAR MANUFACTURER WARRANTY

The manufacturer warrants this product to be free from defects in workmanship and materials for all new purchases from authorized dealers under normal residential use and conditions for a period of three(3) years from the original invoice date. Shipping and handling fees are to be paid for by the customer. The manufacturer agrees, at its option during the warranty period, to repair a defect in material or workmanship or to furnish a repaired or refurbished product of equal value in exchange without charge (except for a fee for shipping, handling, packing, return postage, and insurance which will be incurred by the customer). Such repair or replacement is subject to verification of the defect or malfunction and proof of purchase as confirmed by showing the model number on original dated sales receipt. This warranty applies only to new purchases from authorized dealers.

TABLE OF CONTENTS

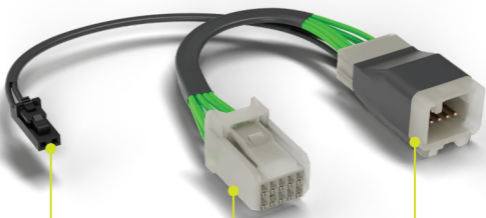
How It Works	1
What's Included	3
Installation Instructions	4

HOW IT WORKS

The **Dongar Classic** is a first-of-its-kind Plug & Play dash cam adapter. It utilizes the power already flowing through the front of your vehicle for a fast, easy, and invisible dash cam setup—no messy hanging wires and no complicated fuse box installation.



HOW IT WORKS



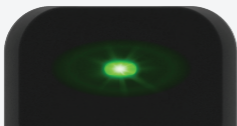
This small 2-pin connector plugs into the Dongar Classic USB module.

The male end plugs into your vehicle's original port to ensure no original functions are lost.

Your vehicle's original power source plugs directly into the female end of the adapter.

GREEN LIGHT

Your Dongar Classic will glow *green* when it is supplying **9-12V**.



RED LIGHT

Your Dongar Classic will glow *red* when it is supplying **5V**.



WHAT'S INCLUDED

A - CLASSIC USB MODULE

Transfers power from your vehicle's wiring harness to your dash cam.



B - SHORT USB CABLE

Connects your dash cam to the Classic USB Module.



C - WIRING HARNESS

Transfers power from your vehicle to the Classic USB Module, then to your dash cam—all while preserving OEM functions.

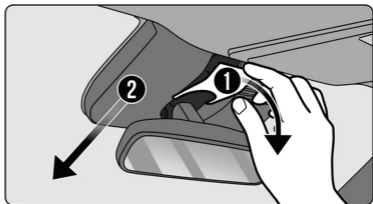


INSTALLATION INSTRUCTIONS

TIP:

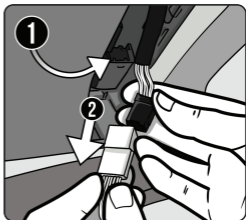
Always turn your vehicle off before beginning installation.

1. Tilt your mirror down for easier access to the shroud. To remove the shroud, place your fingers between the headliner and smaller panel piece and pull straight down. The larger panel can be removed by sliding it down and away from you.



2. Locate and unclip the mirror's connector. Then, plug the matching male end of the wiring harness (Item C) into the mirror's female port.

NOTE: Most Toyotas have a 12-Pin Safety Sense Connector that can easily be confused with your rearview mirror connection: **DO NOT UNPLUG THIS.** Instead, locate the additional 10-Pin connector under your plastic shroud.



3. Plug the male end of the original mirror connector into the female end of the wiring harness (Item C). Plug the smaller 2-pin head into the USB Module (Item A).

4. Connect your dash cam to the USB port on the USB Module (Item A). Turn [ON] your vehicle and ensure the dash cam is receiving power. Once you have confirmed the dash cam is receiving power, mount the dash cam and USB Module on a clean spot on the windshield. Make sure your dash cam has a clear view of the road ahead.

5. Route the cables accordingly and re-assemble the plastic shroud.

To view these instructions online,
scan the QR code below:



Need more help with your install?
Visit dongar.tech/installationhub