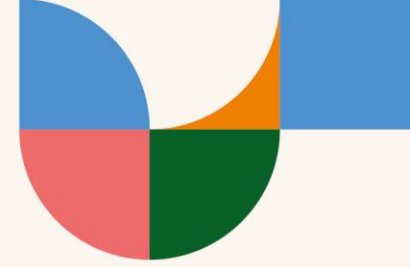




# Summary of Key Costs at IMEX America 2024





**Electricity** (exclusive supplier) early order deadline: Sept 17<sup>th</sup>

<u>120 volt</u>		<u>24hr</u>
500 Watts (5 AMPS)	109.00	218.00
1000 Watts (10 AMPS)	189.00	378.00
1500 Watts (15 AMPS)	226.00	452.00
2000 Watts (20 AMPS)	267.00	534.00

<u>208 volt – single phase</u>		<u>24hr</u>
5 AMP	237.00	474.00
10 AMP	329.00	658.00
15 AMP	386.00	772.00
20 AMP	458.00	916.00
30 AMP	525.00	1,050.00
60 AMP	665.00	1,330.00
100 AMP	972.00	1,944.00
200 AMP	1,397.00	2,794.00
400 AMP	2,445.00	4,890.00

<u>208 volt – three phase</u>		<u>24hr</u>
5 AMP	330.00	660.00
10 AMP	391.00	782.00
15 AMP	448.00	896.00
20 AMP	537.00	1,074.00
30 AMP	661.00	1,322.00
60 AMP	902.00	1,804.00
100 AMP	1,115.00	2,230.00
200 AMP	2,039.00	4,078.00
400 AMP	2,857.00	5,714.00

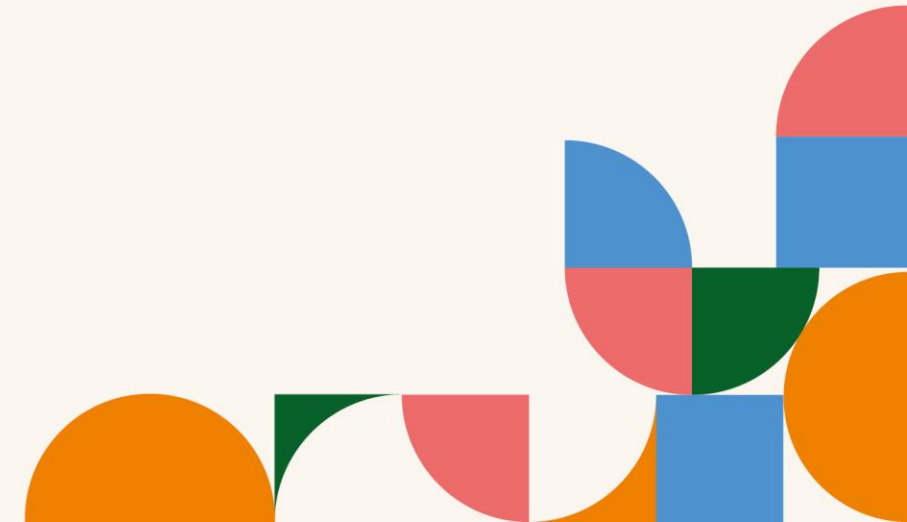
**Plumbing** (exclusive supplier)

early order deadline: Sept 17<sup>th</sup>

Water outlet	471.00 each
Drain outlet	471.00 each
Fill & drain 1-50 gallons	148.00 each
Fill & drain 51-200 gallons	395.00 each
Fill & drain 201-500 gallons	494.00 each
Additional 100 up to 1000 gallons	49.00 each

There is a minimum labor charge of (1) hour for installation and 1/2 hour for removal of all high voltage services and each water and drain outlet. Material charges may apply.

	<u>Electricity</u>	<u>Plumbing</u>
Straight time (1 hour)	111.00	104.00
Overtime (1 hour)	222.00	208.00





# IMEX LAS VEGAS

## OCTOBER 8-10 2024

### Internet (exclusive supplier)

early order deadline: Sept 17<sup>th</sup>

Wired connection – shared	1,100.00 each
Wired connection (shared) – additional IP	325.00 each
Wired connection – dedicated bandwidth (public Ips)	4,290.00 each
Wired connection – dedicated bandwidth (NAT Ips)	3,190.00 each
Floor work (per line)	200.00 each

*Mandalay Bay does not prohibit the use of wireless routers or access points, however please be aware there are many factors outside of their control which can disrupt your wireless signal (such as MiFi's, cell phone hotspots/tethering, wireless routers, etc.)*

### Audiovisual

early order deadline: Sept 2<sup>nd</sup>

#### Monitors

32" TV Monitor	300.00
43" 1080p HD Monitor	550.00
50" 4K Smart TV Monitor	800.00

#### Headphones

Tour Guide System with 5 headsets	500.00
Tour Guide System with 10 headsets	750.00
Wireless Bodypack Microphone	300.00

### GES freight handling (exclusive supplier)

**All freight must be sent to the GES advanced warehouse by September 30.** The warehouse rate for this year is \$113.50 per CWT (1000 lb. minimum)  
**Please note:** Shipments arriving before September 5 will incur a storage fee.

Direct shipping to show site will only be accepted on **Monday October 7 between 8:00 AM To 5:00 PM**, priced at \$122.00 per CWT.

### Catering (exclusive supplier)

Request to distribute samples: To receive authorisation for distributing food or non-alcoholic beverages not purchased through Mandalay Bay (the exclusive Food & Beverage provider), please complete the form no later than 7 days prior to the show opening. [Link](#)

### Show cleaning (exclusive supplier)

IMEX America has made arrangements for basic daily booth cleaning to be carried out at no charge to the exhibitor. This does not apply to the second storey booths where a charge will be made. The basic booth cleaning will include vacuuming and emptying of waste baskets and will be carried out after the show closes. As is usual, the cleaning of exhibits will remain your responsibility as will any special services that may be required such as the removal of bulk trash.

# IMEX LAS VEGAS

## OCTOBER 8-10 2024

### Wall Insert Panel/Graphics

early order deadline: Sept 13<sup>th</sup>

1M Wall Insert Panel	111.50 each
3M Eco Friendly Banner	996.00 each
6M Eco Friendly Fabric Banner	1920.00 each
1M Counter Graphics	89.25 each



Each Shell Scheme booth wall is made of 3x 1m panels



A 3m banner will cover a single 10ft booth wall

### Header Graphics

early order deadline: Sept 13<sup>th</sup>

Angled Header	441.00 each
---------------	-------------



Curved Header	441.00 each
---------------	-------------



Super Header	235.75 each
--------------	-------------





**Furniture**

early order deadline: Sept 13<sup>th</sup>

Individual items

Starbase Table (30" D x 40" H)	222.50 each
Padded Stools	131.00 each
1M Lockable Counter	450.00 each
Wastebasket	21.95 each

Packages

Furniture Package 2	434.50 each
Bar Classic Package 2	657.02 each
Chair Package A	461.95 each

*Note - the Hardwall Booth package comes with the following free furniture:  
 1x Starbase Table (30" D x 40" H)  
 2x Padded Stools  
 1x Lockable Counter  
 1x Recycling Wastebasket  
 1x Waste Basket  
 Carpet (5 colours to choose from)*



Furniture Package 2



Bar Classic Package 2



Chair Package A

**All prices within this document are subject to change at the discretion of the service provider.  
 Only prices at time of order placement are confirmed.  
 All prices in USD unless otherwise stated. Tax not included.**

