



2023

kinetics



2023

Professional

From day one, we have been creating nail products for professionals. Our lab is our key. Our chemists create hundreds of formulas monthly. Only the best ones, tested by professionals and approved by Kinetics educators, are launched to the market.

Passionate for design

We believe design matters. Beautiful product packaging is our passion and necessity. We love elegant, simple, and clean. It is our style of living and the same we express in our products. Coming from Northern Europe, we get our inspiration from the Nordic aesthetic and its pristine nature. We simply can't think of compromising the design.

Friendly

We are all humans. We trust in relationships. We grow together with our partners by sharing our success and mistakes. We listen, and we respond. We are simple, and our products are alike – easy to use, with clean design and clear function.

Exploring

We are passionate about life, and we believe the best way to live it is by exploring it. As a team, we welcome challenges and adventures: rope courses, marathons, and races to name a few. And we bring this spirit to our work in catchy polish names, crazy collection stories, and playful products. It gives color to our lives.

CONTENTS

6

COLOR RANGE

- 8 Color Range
- 11 Color Chart
- 11 Order Information

12

SOLARGEL

- 14 SolarGel Nail Polish
- 15 SolarGel Top Coat
- 16 Displays

20

SHIELD

- 22 Shield Gel Polish
- 23 Shield Base Coats
- 27 Shield Top Coats
- 30 Displays

32

NAIL CARE

- 34 Nano Nail Treatment
- 36 Top & Base Coats
- 38 Cuticle Care
- 42 Gold Collection
- 44 Nail Files
- 46 Polish Removers

48

SKIN CARE

- 50 Hand Creams
- 52 Perfumed Lotions
- 58 Kinetics SPA Manicure
- 62 Kinetics SPA Pedicure
- 66 Retail Pedicure Line

68

ACRYLIC GEL, GEL & ACRYLIC

- 70 Acrylic Gel
- 74 Gel & Acrylic
- 78 Accessories
- 80 Brushes & Files
- 85 Implements & Lamp

86

MARKETING

- 88 Floor Display
- 94 Salon Displays
- 96 Retail Shelf Organizers
- 100 Banners, Posters & Accessories

COLOR RANGE

COLOR RANGE – CLASSIC TO TRENDY FASHION-INSPIRED SHADES. AVAILABLE IN SOLARGEL & SHIELD GEL POLISH SYSTEMS!



kinetics



| | | | | | | | | | |
|--------------------------------|----------------------------------|----------------------------------|--------------------------------|------------------------------|--------------------------------|------------------------------------|------------------------------------|---------------------------------|----------------------------|
| #001 (C) Beginnings | #480 (C) It's a Match | #153 (S) Cashmere | #354 (C) Spotlight Fall | #391 (C) Pure Instinct | #383 (C) Nothing But Love | #343 (C) Power of Fire | #234 (P) Red Gown | #077 (C) Imperial | #524 (C) Piece of Cake |
| #477 (C) Flawless | #230 (S) Ever Cream | #007 (P) Sweet Little Lies | #160 (S) Demure | #081 (C) Traffic Jam | #498 (N) Wild Fuchsia | #073 (C) Sweet Smell of Success | #258 (C) Urban Legend | #025 (G) Raspberry Beret | #512 (C) Umber Crave |
| #199 (C) Lumière | #479 (C) Soulmate | #316 (C) Lace Pointes | #200 (C) Nude by Nude | #168 (C) Pale Petunia | #196 (P) Electro Pink | #404 (C) More Lipstick | #418 (P) Mirror-Like Red | #448 (S) Rebel Heart | #505 (C) K-Spirit |
| #485 (S) Oblivion | #405 (C) So Human | #229 (P) Naked Beige | #084 (G) Sparkling Cutie | #422 (C) Login Failed | #462 (C) Raspberry Gin | #474 (C) Epicure Wine | #384 (C) Cold Days, Warm Hearts | #030 (C) Poet's Heart | #511 (C) Golden Hour |
| #277 (C) Just Married | #454 (C) Beauty in DNA | #471 (C) Baroque Essential | #374 (S) Wasted Beauty | #058 (C) Delicate Lace | #225 (C) Crazy Daizy | #164 (S) Raspberry Fizz | #029 (C) Enchanting Dream | #483 (C) Crimson Queen | #509 (C) Affection |
| #429 (C) Hurricane Mode | #154 (C) Silk & Satin | #132 (S) Morning on the Beach | #220 (C) Pink Silence | #190 (S) Pink Twice | #206 (C) So Coral | #440 (C) Serene Doubts | #027 (P) Tango in Paris | #257 (C) City Queen | #504 (C) Blond Bond |
| #002 (P) Bridal Dress | #358 (C) Give Me Better Price | #375 (C) Body Language | #361 (C) Secret Deal | #457 (C) Secret Weapon | #362 (C) Too Hot to Believe | #380 (C) Hedonist Red | #441 (C) Absolute Catch | #489 (P) Iron Red | #430 (C) Fly High |
| #389 (C) Inner Peace | #313 (S) Giselle | #046 (P) Cinnamon Girl | #456 (C) Synergy Match | #499 (C) Unfreeze | #425 (C) Red Hashtag | #409 (C) Berries on Ice | #074 (C) Unspoken Love | #321 (S) Audrey | #294 (C) Frost Yourself |
| #187 (P) Be Mine | #455 (C) Peach Rock | #249 (C) Empty Streets | #332 (C) Bossa Nova | #381 (C) Ready, Set, Snow | #076 (C) Bonnie Red | #224 (C) Signature Wine | #484 (G) Courage | #021 (C) Victory | #397 (N) No Regrets |
| #453 (C) Unconditional Love | #517 (S) Romance of Nude | #317 (C) Grand Plié | #407 (C) Pretending Pink | #423 (C) Unfollow Pink | #435 (C) Get *Red* Done | #377 (C) I'm Not That Kind | #516 (P) My Glowier | #335 (C) One Night Girl | #431 (N) Flame Fame |
| #004 (C) First Date | #390 (C) Skin to Skin | #186 (P) Love Me, Love Me Not | #334 (C) Lost in Copacabana | #399 (C) Bad Color | #207 (C) Dress to Impress | #507 (C) Sangria Talks | #408 (C) Looking Strong | #031 (C) Falling in Love | #495 (N) Pinnable |
| #005 (C) Stark Naked | #315 (C) Prima | #392 (C) Nude Different | #280 (C) French Lilac | #424 (C) Color Not Found | #465 (C) Bloody Red | #368 (C) It's Not My Passport | #301 (C) Hug Me | #372 (C) Kiss Me Not | #307 (N) Spritz Aperol |
| #367 (C) Why Not My Friend | #469 (C) Dust Temple | #472 (C) Sorrow Collector | #394 (C) Naked Truth | #432 (N) Adrenaline Blush | #208 (C) Jazz Lips | #210 (C) Mulberry | #256 (C) Gangsterina | #356 (C) Rhino on the Carpet | #463 (N) Guiltless |
| #421 (C) Loading Beige... | #437 (C) Mild Flaws | #203 (C) Piano, Piano | #204 (C) Purse | #308 (N) Raspberry Mojito | #350 (C) Purple Haze | #363 (C) Rub the Lamp | #396 (C) So Much and More | #459 (C) Kindred | #195 (N) Pinky Winky |
| #494 (C) Often Soften | #006 (C) Zephyr | #406 (C) Almost Naked | #395 (C) Highly Unlikely | #496 (N) Recharged Blush | #401 (C) Freedom | #443 (C) Tender Memories | #442 (C) Whisper | #522 (S) Rough Love | #506 (C) Correlation |
| #478 (C) Skin Twin | #059 (C) Rose Petal | #438 (P) Holy Smokes | #439 (C) Morning Mist | #497 (N) Savage Wink | #370 (C) Pink Drink | #475 (C) Muse Affect | #348 (C) Goddess | #482 (C) Tomato Tamato | #331 (C) King of Red |
| #470 (C) Artsy-Fartsy | #314 (C) Pirouette | #513 (C) HQ Bond | #353 (C) Vagabond Party | #382 (C) Ice Breaker | #066 (C) Hot Spot | #028 (S) Magic Wand | #175 (C) Blackout | #481 (C) Alarm | #464 (C) Scarlet Letter |

| | | | | |
|----------------------------|-------------------------------|-------------------------------|--------------------------------------|-----------------------------------|
| #410 (C) Alluring Brown | #319 (C) Swan Lake | #466 (C) Innocence | #303 (GX) Stardust | #446 (G) No Marionette |
| #473 (C) Bon Vivant | #500 (C) Melt Down | #467 (C) Blue Jeans | #233 (S) Marlene | #205 (S) Flirty |
| #458 (C) Roots | #427 (C) Error 404 | #508 (C) Denim Gods | #420 (S) Partyholic | #518 (S) Success in Rosé |
| #184 (C) Mudness | #341 (C) Pearl Hunter | #159 (C) Fashion Blue | #417 (S) Shh, I'm Fabulous | #138 (S) Dazzle |
| #488 (P) Hidden Gem | #373 (C) Lost Soul | #403 (C) Restless Sleepers | #490 (P) Bizarre Steel | #486 (P) Pearl Glaze |
| #510 (C) Depth of Tribe | #426 (C) No Wi-Fi | #328 (P) Star Sapphire | #419 (S) Extravaganza | #259 (GX) Goldy |
| #476 (C) Renascent | #189 (S) Flowery | #253 (C) Graffiti Quick | #452 (P) Whatever, Blue | #415 (G) Sparkling |
| #503 (C) Mindset | #318 (C) Ballerina | #491 (S) Blank Space | #304 (GG) Glitter Storm | #323 (S) Glam Shine |
| #461 (N) Electra | #376 (C) Ex's | #468 (C) Not Today, Bobby | #451 (G) Rare Bliss | #521 (S) Goal Digger |
| #198 (N) Yellow Shock | #385 (C) Love in the Snow | #228 (C) Sugar Blue | #487 (S) Silver Lining | #445 (GX) Unicorn Tears |
| #493 (C) Fresh Start | #251 (C) Cat as Accessory | #393 (C) Ivory Night | #519 (S) Influence Spices | #101 (G) Silver Fairy Dust |
| #428 (C) Reconnect | #386 (C) Ice Is Nice | #514 (C) Ash Feels | #351 (G) Running out of Champagne | #413 (G) Glitter for Breakfast |
| #436 (N) She Fix | #444 (C) Faith Reflection | #388 (C) Wrap it up! | #302 (GX) Rich & Chic | |
| #501 (C) Pathos | #523 (C) Verdict: Green | #411 (C) Fragile | #447 (G) It's a Mess | |
| #460 (C) Bound Up | #412 (C) Kind of Blue | #515 (C) Take Me to Homme | #450 (G) Let's Make a Mistake | |
| #502 (C) Balance Odds | #402 (C) Raw Me Green | #492 (P) Black Parade | #449 (G) A Bit of a Devil | |
| #276 (C) Never too Late | #365 (C) Shark In the Pool | #188 (C) Jet Black | #520 (GX) Glamcore | |

NEW LATEST ADDITIONS

| | | | | |
|-----------------------------|----------------------------|-------------------------|--------------------------|-----------------------------|
| #525 (C) Lucid Fantasy | #532 (C) Down to Earth | #539 (C) Top Magnet | #546 (C) Cherry Ripe | #561 (S) Suit Up |
| #526 (S) Spirit of Nude | #533 (N) Fake News | #540 (C) Sublime | #547 (C) Beat of Beat | #562 (S) Dark Boundaries |
| #527 (S) Above the Bloom | #534 (N) Fortune | #541 (C) Ginger Hint | #548 (C) Oak Soak | #563 (S) Spy Me |
| #528 (C) Zestful Blush | #535 (N) Highlighted | #542 (C) New Breath | #557 (C) Sand Storm | #564 (C) Poison Kiss |
| #529 (C) Vivacity | #536 (C) Essence of All | #543 (C) Fade Jade | #558 (P) Gold Finger | |
| #530 (C) Luminous Peace | #537 (C) Magenta Vibes | #544 (P) Soul Treat | #559 (S) Time to Bond | |
| #531 (C) Bubbly Cloud | #538 (C) Flashback | #545 (C) Harmony | #560 (C) Skyfall | |

COLOR CHART



#KPC11
#250 Color Chart

ORDER INFORMATION



All colors are available in SolarGel and Shield systems with the same number. E.g., KNP021 refers to SolarGel color Victory and KGP021N refers to Shield color Victory.

Color Legends: (S) – Shimmer, (P) – Pearl, (C) – Creme, (N) – Neon, (G) – Glitter, (GX) – Glitter XL, (GG) – Galaxy Glitter

All printed colors are approximate. For accurate color representation always consult Color Chart #KPC11.

SOLARGEL

UP TO 10 DAYS WEAR
INCREDIBLE GLOSSY GEL-LIKE SHINE
3D BRUSH – APPLICATION EASIER THAN EVER BEFORE



kinetics



SOLARGEL NAIL POLISH

SOLARGEL PROFESSIONAL NAIL POLISH 0.5 fl oz/ 15 ml

SolarGel is a 2-step latest-generation nail polish system that uses elements of gel polish to achieve superior shine and give it a gel-like look without drying in a lamp. It has a scratch-resistant top coat, providing longer wear time compared to traditional nail polish.



#KNP006
SolarGel Nail Polish "Zephyr"

#KNP021
SolarGel Nail Polish "Victory"

#KNP210
SolarGel Nail Polish "Mulberry"

(i) Choose colors from the Color Range section (pages 8 to 10), or for better accuracy use Color Chart #KPC11.

SOLARGEL TOP COAT

SOLARGEL PROFESSIONAL TOP COAT 0.5 fl oz/ 15 ml

Kinetics SolarGel Top Coat brings a scratch-proof gel-like look and superior gloss, lasts up to 10 days, and requires no UV/LED light. Should be used with SolarGel professional nail polish.



#KDTC
SolarGel Top Coat

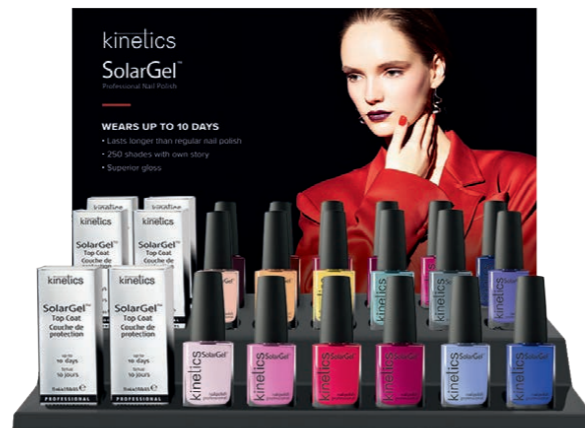
DISPLAYS

10 PCS DISPLAY



#VD10
SolarGel vacuum display for bottles.
17 x 25 x 15 cm (WxHxD)
Sold empty with headercard. Products to be ordered separately.

18+6 PCS DISPLAY



#VD01
SolarGel vacuum display for bottles and boxes with headercard.
35 x 25 x 15 cm (WxHxD)
Sold empty with headercard. Products to be ordered separately.

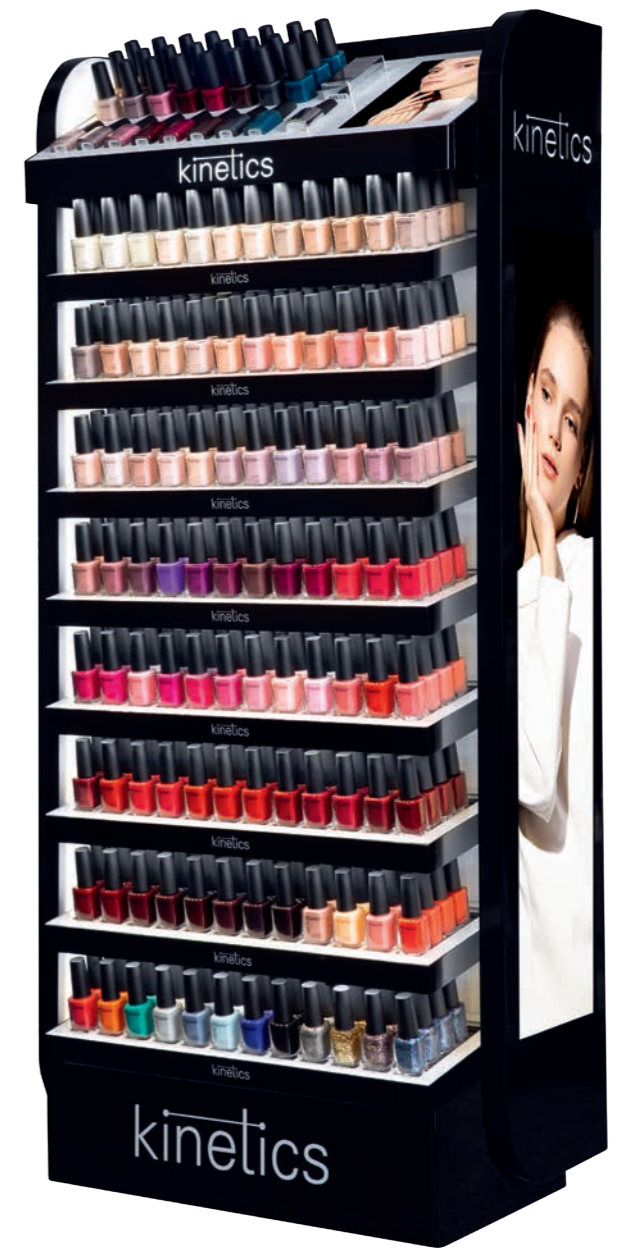
24 PCS DISPLAY



#VD02
SolarGel vacuum display for bottles with headercard.
35 x 25 x 15 cm (WxHxD)
Sold empty with headercard. Products to be ordered separately.

123 PCS SINGLE-SIDED FLOOR DISPLAY

The Kinetics Floor Display is an excellent single-sided presenter for your salon or retail store. Sleek and luxurious, it holds 96 SolarGel or Shield colors, including the latest seasonal collections.



#KDFR04C
Single-sided Floor Display.
64 x 136 x 31 cm (WxHxD)
Sold empty. Products to be ordered separately.

24 PCS SALON DISPLAY

Organize your salon or shop with the Kinetics Salon Display with its sleek, elegant design in an aesthetic black. This display features 6 each of 24 different items. Use several displays in a row to create a polish wall and show off as many colors as you like.



#KPD24
Salon Display.
30 x 48 x 17 cm (WxHxD)
Sold empty. Products to be ordered separately.

48 PCS SALON WALL DISPLAY

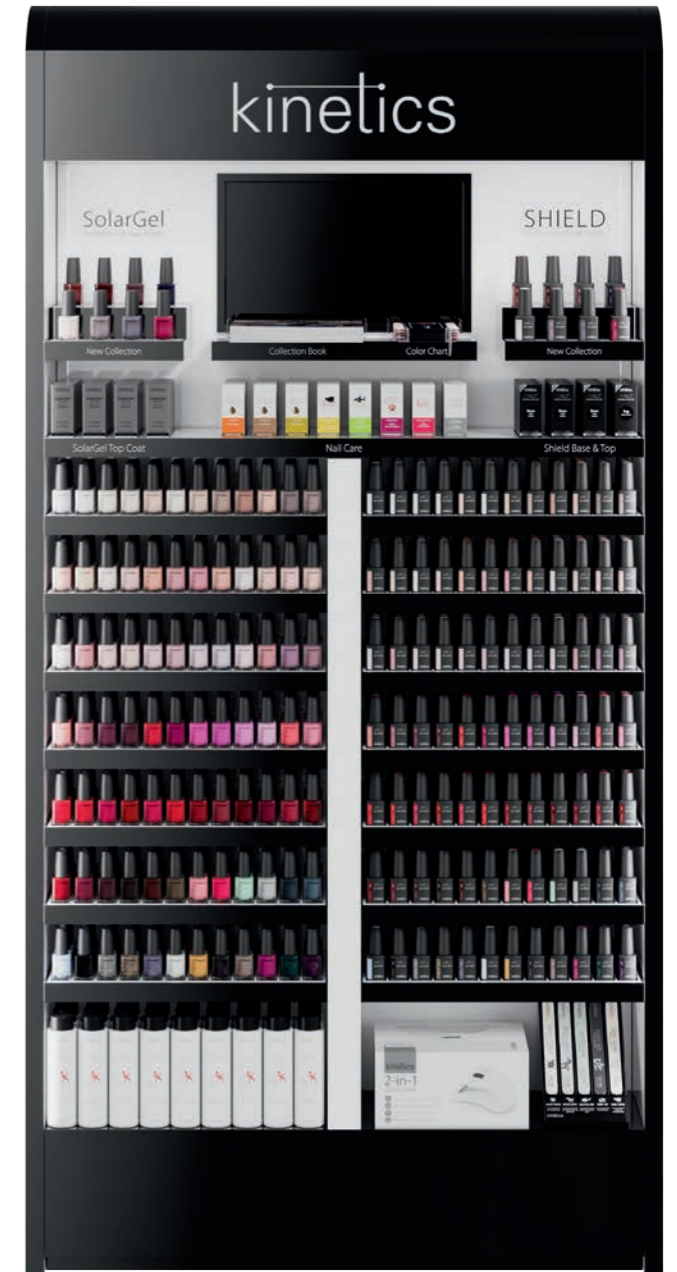
A space-saving, stylish Kinetics Salon Wall Display in sleek, black aesthetics that fits in almost every salon. It features 1 each of 48 different bottles in either Shield or SolarGel. Use several displays to create a polish wall for a rich color presentation.



#KPD25
Salon Wall Display.
44 x 57 x 3 cm (WxHxD)
Sold empty. Products to be ordered separately.

227 PCS LARGE FLOOR DISPLAY

The Kinetics Large Floor Display is an excellent presenter for retail or professional stores. Elegant and luxurious, in the Kinetics style, it holds 92 Shield and 92 SolarGel colors, including the latest seasonal collections, as well as 8 top sellers of nail care.



#KDFR06A
Large Floor Display.
100 x 200 x 30 cm (WxHxD)
Sold empty. Products to be ordered separately.

SHIELD

250 TRENDY FASHION COLORS
PERFECT COVERAGE, HIGHLY PIGMENTED FORMULA
3D BRUSH – EASY AND FAST APPLICATION



kinetics



SHIELD GEL POLISH



SHIELD GEL POLISH 0.5 fl oz/15 ml

Shield gel polish is a classic 3-step highly pigmented professional formula with a wide color range. It cures in both UV and LED lamps. HEMA-free formula makes the product less likely to cause irritating skin reactions to customers or nail technicians. All Shield colors are available also in SolarGel Professional Nail Polish formula.



#KGP006N
Shield Gel Polish "Zephyr"

#KGP021N
Shield Gel Polish "Victory"

#KGP210N
Shield Gel Polish "Mulberry"

i Choose colors from the Color Range section (pages 8 to 10), or for better accuracy use Color Chart #KPC11.

SHIELD BASE COATS



RUBBER BASE

SHIELD RUBBER BASE 0.5 fl oz/15 ml

Flexible, makes the nails feel more natural.
Can be applied in both, thin layer and builder layer for even nail shape.
Wear time up to 5 weeks.
Can be used as a base before gel system use.
Curing time in LED lamp - 30 sec.



#KGPRBN
Shield Rubber Base

HEMA-FREE RUBBER BASE

SHIELD RUBBER BASE HEMA-FREE
0.5 FL oz/15 ml

Flexible, makes the nails feel more natural.
HEMA-free formula - no itching, peeling or redness on skin.
Can be applied in both, thin layer and builder layer for even nail shape.
Wear time up to 4 weeks.
Curing time in LED lamp - 30 sec.



#KGPRB01
Shield HEMA-free Rubber Base

HEMA-FREE HARD BASE

SHIELD HARD BASE HEMA-FREE
0.5 fl oz/15 ml

Firm, holds the shape for entire wear.
HEMA-free formula - no itching, peeling or redness on skin.
Can be applied only in the builder layer for leveling the nail plate, as well as used for nail repair and extensions up to 2 mm.
Wear time up to 4 weeks.
Curing time in LED lamp - 30 sec.



#KGPHB01
Shield HEMA-free Hard Base

POWER WHITE

SHIELD GEL POLISH 0.5 fl oz/15 ml

Highly pigmented – opaque color with good coverage.
Bright white – crisp, snow white color for perfect French.



#KGP901N
Shield Power White

NEW HEMA-FREE CERAMIC BASE

SHIELD CERAMIC BASE HEMA-FREE
0.5 fl oz / 15 ml

Firm, holds the shape for entire wear.
HEMA-free formula - no itching, peeling or redness on skin.
Base and color 2 in 1. Wide range of 24 colors to choose from.
Can be applied only in the builder layer for leveling the nail plate, as well as used for nail repair and extensions up to 2 mm.
Wear time up to 4 weeks.
Curing time in LED lamp - 60 sec.



#KGPCB903
Shield HEMA-free Ceramic Base
Bright Pink

Ceramic base range



SHIELD TOP COATS

NEW MATT TOP COAT

SHIELD MATT TOP COAT 0.5 fl oz / 15 ml

Matt effect top with no tacky layer.
Intense matt effect.
Even and easy application.
Effect stays for up to 3 weeks.



#KGPT106
Shield Matt Top Coat

CLASSIC TACK FREE TOP COAT

SHIELD TOP COAT 0.5 fl oz / 15 ml

- Durable – long-lasting, scratch-proof gloss.
- True – does not change color.
- Easy – self-leveling formula.



#KGPTFN01
Shield Classic Tack Free Top Coat

EXTRA GLOSS TOP COAT

SHIELD TOP COAT 0.5 fl oz / 15 ml

- Glossy – superior shine on any color.
- Fast – curing time 30 sec. in LED / 90 sec. in UV Lamp.
- No shrinkage – highly compatible with any color coats.



#KGPTEN
Shield Extra Gloss Top Coat

BOOSTER TACK FREE TOP COAT

SHIELD TOP COAT 0.5 fl oz / 15 ml

- Durable – long-lasting, scratch-proof gloss.
- Highlight – boosts the color, especially the bright and neon shades.
- Light formula – easy application.



#KGPTFN02
Shield Booster Tack Free Top Coat

HEMA-FREE SHINE+ TOP COAT

SHIELD HEMA-FREE SHINE+ TOP COAT 0.5 fl oz / 15 ml

- Medium consistency top coat with tacky layer.
- Durable shine for 28 days.
- Elastic structure eliminates cracks.
- For nail art techniques.



#KGPTTC
Shield HEMA-free Top Coat

DISPLAYS

10 PCS DISPLAY



#VD11
Shield vacuum display for bottles.
17 x 25 x 15 cm (WxHxD)
Sold empty with headcard. Products to be ordered separately.

18+6 PCS DISPLAY



#VD03
Shield vacuum display for bottles and boxes.
35 x 25 x 15 cm (WxHxD)
Sold empty with headcard. Products to be ordered separately.

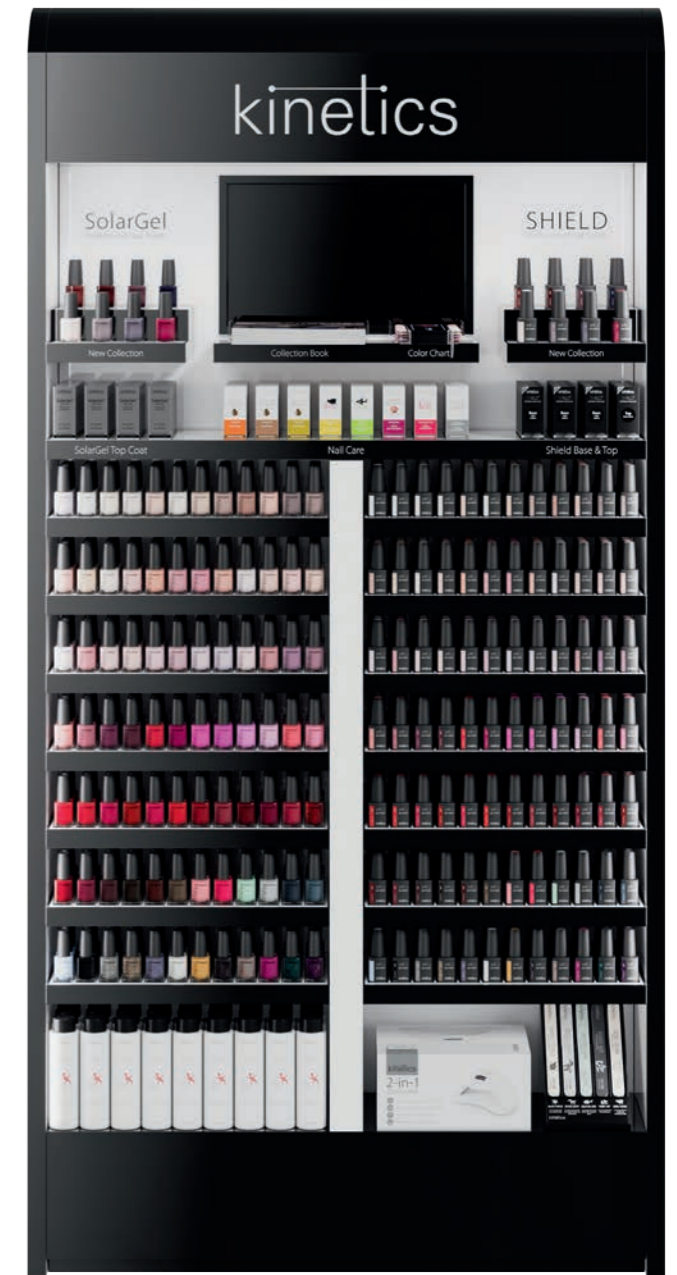
24 PCS DISPLAY



#VD04
Shield vacuum display for bottles.
35 x 25 x 15 cm (WxHxD)
Sold empty with headcard. Products to be ordered separately.

227 PCS LARGE FLOOR DISPLAY

The Kinetics Large Floor Display is an excellent presenter for retail or professional stores. Elegant and luxurious, in the Kinetics style, it holds 92 Shield and 92 SolarGel colors, including the latest seasonal collections, as well as 8 top sellers of nail care.



#KDFR06A
Large Floor Display.
100 x 200 x 30 cm (WxHxD)
Sold empty. Products to be ordered separately.

NAIL CARE

PROFESSIONAL RANGE OF NAIL CARE PRODUCTS –
NAIL TREATMENTS, CUTICLE OILS, TOP & BASE COATS,
AND HARDENERS FOR ALL NAIL TYPES.



kinetics



NANO NAIL TREATMENT

NANO GREEN SHARK

NAIL TREATMENT 0.5 fl oz / 15 ml

Top efficiency nail hardener.
An instant help for damaged and weak nails.
Can be used also as a base coat and top coat.



#KTR05N
Nano Green Shark

24 PCS NANO TREATMENT DISPLAY

Attractively designed vacuum counter display holds 24 Nano treatment boxes.



#VD12
Nail care vacuum display for boxes.
35 x 25 x 15 cm (WxHxD)
Sold empty with headercard. Products to be ordered separately.

NANO SEAL

NAIL TREATMENT 0.5 fl oz / 15 ml

Continuous therapy for brittle nails.
A cocktail of vitamins A, E, B₅, and C provides constant moisture to dry and brittle nails and helps restore a healthy condition.



#KTR03N
Nano Seal

NANO RHINO

NAIL TREATMENT 0.5 fl oz / 15 ml

Instant treatment for soft nails. A natural keratin and aldehyde treatment for soft and peeling nails. Builds a second "nail layer" to instantly restore durability.



#KTR02N
Nano Rhino

NANO SHARK

NAIL TREATMENT 0.5 fl oz / 15 ml

Emergency Nail Treatment.
Instant help for severely damaged nails.



#KTR04N
Nano Shark

Availability limited according to regulations of country

TOP & BASE COATS

TOUCH ME

BASE COAT 0.5 fl oz / 15 ml

Base Coat for natural nail protection.



#KTMB
Touch Me Base Coat

KWIK KOTE

TOP COAT 0.5 fl oz / 15 ml

Fast-drying, perfect-flow top coat with durable, chip-proof shine.



#KKOT
Kwik Kote

24 PCS TOP & BASE VACUUM DISPLAY

Attractively designed vacuum counter display holds 24 boxes.



#VD12
Nail care vacuum display for boxes.
35 x 25 x 15 cm (WxHxD)
Sold empty with headcard. Products to be ordered separately.

KWIK DRY

DRYING DROPS 0.5 fl oz / 15 ml

Fast drying drops to dry your nail polish in 60 seconds.



#KDRY
Kwik Dry

THIN POLISH

RESTORES NAIL POLISH FLUIDITY
0.5 fl oz / 15 ml

Polish thinner drops to keep your nail polish at its proper consistency.



#KPTH
Thin Polish

CUTICLE CARE

CUTICLE OILS

Professional size (75 ml) with a dropper for daily use in salons.
 Retail size (15 ml) with brush for in-home use.
 Mini size (5 ml) with brush for travel purposes.

MINI OILS 0.17 fl oz/5ml



#KTR0502
Orange Cuticle Oil



#KTR0602
Lemon Citron Cuticle Oil



#KTR0202
Almond Cuticle Oil

RETAIL SIZE 0.5 fl oz/15 ml



#KTR05B
Orange Cuticle Oil in box



#KTR06B
Lemon Citron Cuticle Oil in box



#KTR02B
Almond Cuticle Oil in box

PROFESSIONAL SIZE 2.5 fl oz/75 ml



#KTR0575
Orange Cuticle Oil in box



#KTR0675
Lemon Citron Cuticle Oil in box



#KTR0275
Almond Cuticle Oil in box

30 PCS MINI CUTICLE OIL DISPLAY

Cute mini display, good for retail stores and salons.
Holds 10 ea. of Almond, Lemon, and Orange mini oils.

Contains:
10 Mini Almond Cuticle Oils
10 Mini Lemon Cuticle Oils
10 Mini Orange Cuticle Oils



#KTRD02
Mini Cuticle Oil Display
8.7 x 9 x 11 cm (WxHxD)

24 PCS CUTICLE OIL DISPLAY

Holds a full selection of Kinetics cuticle care – Almond, Lemon, and Orange cuticle oils and Grapeseed serum.



#VD12
Nail care vacuum display with headercard.
35 x 25 x 15 cm
Sold empty. Products to be ordered separately.

GRAPSEED NAIL SERUM

NAIL SERUM 0.5 fl oz / 15 ml

A regenerating treatment for the nail plate, cuticles, and nail root (matrix).



#KSGR01
Grapeseed Nail Serum

AHA CUTICLE OFF

CUTICLE REMOVER 0.5 fl oz / 15 ml

New innovative formula with caviar lime extract gently yet effectively exfoliates and removes dead skin cells.

CUTICLE OFF

CUTICLE REMOVER 0.5 fl oz / 15 ml

Intense-action, professional-use cuticle remover and callus softener.



#KCR11
Cuticle Remover



#KACR11
AHA Cuticle Remover

GOLD COLLECTION

WHITE GOLD HARDENER

NAIL HARDENER 0.5 fl oz/15 ml

Premium nail hardener in a light, creamy milk color with a golden shimmer. Enriched with pure gold particles, it reinforces the nail plate and provides nails with a smooth and pearly finish.



#KGC01
White Gold Hardener

ROSE GOLD HARDENER

NAIL HARDENER 0.5 fl oz/15 ml

Premium nail hardener in a subtle translucent pink color with a golden shimmer. Enriched with pure gold particles, it reinforces the nail plate and provides nails with a smooth and pearly finish.



#KGC02
Rose Gold Hardener

GOLD ELIXIR

NAIL ELIXIR 0.5 fl oz/15 ml

Luxury elixir with pure gold helps to restore dry, damaged, and weak nails. The safe, water-based formula features a keratin-like peptide that heals cuticles and prevents nail splitting. Large golden jewels ensure a premium look.



#KGC03
Gold Elixir

24 PCS GOLD COLLECTION DISPLAY

Attractively designed vacuum counter display holds 24 Gold Collection boxes.



#VD06
Gold Collection vacuum display with headercard.
35 x 25 x 15 cm (WxHxD)
Sold empty. Products to be ordered separately.

NAIL FILES

Selection of professional-quality retail files, individually wrapped.

WHITE TURTLE

FILE 180/180 GRIT, FOR NORMAL NAILS



#KF180W
File White Turtle

DOLPHIN DAN

FILE SHINER, FOR SUPERIOR GLOSS



#KFDDW
File Dolphin Dan

MISS RHINO

FILE 180/240 GRIT, FOR WEAK AND DAMAGED NAILS



#KFGRW
File Miss Rhino

kinetics

KRAZY KAT

FILE 150/180 GRIT, FOR PEDICURES



#KFKKW
File Krazy Kat

ZEBRA ZIGGY

FILE 120/180 GRIT, FOR ALL NAIL TYPES



#KFZZW
File Zebra Ziggy

RETAIL FILES DISPLAY

A professional way to display our entire selection of files. Find your favorite animal icon in an instant!



#KRFD01
Retail Files Display.
Sold empty. Products to be ordered separately.

kinetics

POLISH REMOVERS

RED LIZARD

GEL POLISH REMOVER 7.6 fl oz/225 ml; 30.4 fl oz/900 ml

Professional Gel Polish Remover with a fresh aloe vera scent to remove gel polish in 10 – 15 minutes.



#KRRL32
Red Lizard Gel Polish Remover
30.4 fl oz/900 ml

#KRRL08
Red Lizard Gel Polish Remover
7.6 fl oz/225 ml

BLACK LIZARD

POLISH REMOVER
7.6 fl oz/225 ml; 30.4 fl oz/900 ml

A professional nail polish remover with a fresh aloe vera scent that leaves no hint of acetone odor. It's perfect for healthy nails and gel extensions, and it acts immediately, removing even old, dry nail polish.



#KRBL32
Black Lizard Nail Polish Remover
with Aloe Vera Scent
30.4 fl oz/900 ml

#KRBL08
Black Lizard Nail Polish Remover
with Aloe Vera Scent
7.6 fl oz/225 ml

GREEN LIZARD

ACETONE-FREE POLISH REMOVER
7.6 fl oz/225 ml; 30.4 fl oz/900 ml

This is a gentle, professional polish remover with a refreshing apricot scent and attractive peach hue. It's perfect for natural nails and acrylics, and safe to use on weak and damaged nails.



#KRGL32
Green Lizard Acetone-Free Nail
Polish Remover with Apricot Scent
30.4 fl oz/900 ml

#KRGL08
Green Lizard Acetone-Free Nail
Polish Remover with Apricot Scent
7.6 fl oz/225 ml

SKIN CARE

HAND CREAMS
HAND & BODY LOTIONS
KINETICS SPA



kinetics



HAND CREAMS

HAND CREAMS 5.07 fl oz/150 ml

Kinetics Hand Care line contains of 3 efficient products for daily skin care. New cream formulas not only provide moisturizing and protecting qualities, but also contribute to deep regeneration of the skin. Each product is formulated using the highest grade of active ingredients and delivers instant and visible results. Light and non-greasy textures absorb instantly and feel comfortable on the skin. This is where salon meets home, providing highest quality products accessible for everyone.

LUXURY LIFTING

New generation filler for more radiant look to boost anti-age performance.

Light texture cream provides more radiant look, reveals a smoother and younger looking complexion.

Active ingredients:

- Hyaluronic Acid – provides intense hydration, boosting skin's overall radiance while instantly reducing visible signs of ageing.
- Shea Butter – seals moisture in the upper skin layers and keeps it hydrated for several hours.



#KPHC04
Luxury Lifting

RICH CREAM

Urea is added for the purpose of healing cracked skin. 10% of Urea and 5% of Shea Butter blends with Argan Oil creating extremely effective formula to protect, nourish and moisturize hands.

Active ingredients:

- Urea – helps Argan Oil to absorb deeper, whilst working in synergy with Shea Butter to create healthy environment for the skin.
- Shea Butter – seals moisture in the upper skin layers and keeps it hydrated for several hours.



#KPHC05
Rich Cream

SUPER MOISTURE SPF30

New generation user-friendly UV filters with no toxicology threats. A creamy and lightweight texture leaves a velvety and smooth feel. Moisturizing cream provides UVA and UVB protection SPF 30.

Active ingredients:

- Panthenol – improves skin's hydration and leaves smooth appearance. Intense moisturizer with soothing effect.
- Ginger Extract – for softer, smoother and more radiant skin.



#KPHC06
Super Moisture SPF30

PERFUMED LOTIONS

PERFUMED LOTIONS 8.45 fl oz/250 ml

The Perfumed Lotion line provides 24-hour moisturizing in an extra-light texture. Lotions are enriched with shea butter and unique essential oils from Grasse, France.



#KL025
Sicilian Orange & Amber



#KL026
Sichuan Pepper & Cedar



#KL027
Rosewood & Sage



#KL028
Narcissus & Musk



#KL024
Geranium & Raspberry



#KL023
Peach & Bergamot Orange



#KL022
Patchouly & Vetyver



#KL021
Cranberry & Peach Tree Flower



#KL020
Green Tea & Lemon



#KL019
Fig & Violet



#KL018
Lavender & Pineapple



#KL017
Green Apple & Jasmin



#KL016
Freesia & Blackcurrant



#KL015
Lemon & Verbena



#KL014
Amber & Vanilla



#KL013
Pomegranate & Pink Pepper



#KL012
Ocean & Woods



#KL010
Frangipani & Sicilian Lemon



#KL009
Silk Orchid



#KL008
Ylang-Ylang
& Madagascar Vanilla



#KL007
Turkish Rose & Black Tea



#KL006
Jasmine & White Musk



#KL005
Hibiscus & Rose Water



#KL004
Orange Blossom & Ginger



#KL003
Spiced Orange
& Sandalwood



#KL002
Brazilian Lime & Cedar

PROFESSIONAL-SIZE PERFUMED LOTIONS

PROFESSIONAL-SIZE L PERFUMED LOTIONS 32.12 fl oz./950 ml



| Product Name | Item # |
|-----------------------------|---------|
| Orange Blossom & Ginger | KL00430 |
| Hibiscus & Rose Water | KL00530 |
| Jasmine & White Musk | KL00630 |
| Silk Orchid | KL00930 |
| Frangipani & Sicilian Lemon | KL01030 |

LOTION SAMPLES

PERFUMED LOTION SAMPLES 0.10 fl oz/3 ml

Perfect testers for your salon or store.



#KL02501
Sicilian Orange & Amber
Lotion Sample



#KL02601
Sichuan Pepper & Cedar
Lotion Sample



#KL02701
Rosewood & Sage
Lotion Sample



#KL02801
Narcissus & Musk
Lotion Sample



#KL02401
Geranium & Raspberry
Lotion Sample



#KL02301
Peach & Bergamot Orange
Lotion Sample



#KL02201
Patchouly & Vetyver
Lotion Sample



#KL02101
Cranberry & Peach tree flower
Lotion Sample



#KL01601
Freesia & Black Currant
Lotion Sample



#KL01501
Lemon & Verbena
Lotion Sample



#KL01401
Amber & Vanilla Lotion
Lotion Sample



#KL01301
Pomegranate & Pink Pepper
Lotion Sample



#KL01201
Ocean & Woods
Lotion Sample



#KL01001
Frangipani & Sicilian
Lemon Lotion Sample



#KL00901
Silk Orchid
Lotion Sample



#KL00801
Ylang-Ylang & Madagascar
Vanilla Lotion Sample



#KL00701
Turkish Rose & Black Tea
Lotion Sample



#KL00601
Jasmine & White Musk
Lotion Sample



#KL00501
Hibiscus & Rose Water
Lotion Sample



#KL00401
Orange Blossom & Ginger
Lotion Sample



#KL02001
Green Tea & Lemon
Lotion Sample



#KL01901
Fig & Violet
Lotion Sample



#KL01801
Lavender & Pineapple
Lotion Sample



#KL01701
Green Apple & Jasmin
Lotion Sample



#KL00301
Spiced Orange &
Sandalwood
Lotion Sample



#KL00201
Brazilian Lime & Cedar
Lotion Sample

KINETICS SPA MANICURE

Your hands deserve the same regenerating skin care as your face. The finest textures, scientific-grade ingredients, and perfume from Grasse are what make this Kinetics SPA special.
 Finest Textures – Light, fast-absorbing textures in all products.
 Scientific-grade ingredients – Hyaluronic acid and peptides for instant results.
 Natural perfume from Grasse – White musk base, ginger heart, and orange blossom top notes.



PRO SOAK

7.6 fl oz/225 ml; 30.4 fl oz/900 ml

An aromatic and refreshing soak to soften cuticles and calluses. Provides cleansing and hydration to the skin.

- Active Ingredients:
- Ginger extract for a fresh, clean feel
 - Orange extract for enriched hydration



#KSMS30
Pro Soak
30.4 fl oz/900 ml



#KSMS08
Pro Soak
7.6 fl oz/225 ml

PRO PEELING

8.45 fl oz/250 ml; 16.9 fl oz/500 ml

Gentle and light-textured peeling to cleanse the skin and make it look vibrant. Moisturizes skin while exfoliating.

- Active Ingredients:
- Bamboo particles for vibrant skin texture
 - Lactic acid for gentle exfoliation
 - Almond oil for enriched moisturizing



#KSMLP08
Pro Peeling
8.45 fl oz/250 ml



#KSMLP16
Pro Peeling
16.9 fl oz/500 ml

PRO FILLER

8.45 fl oz/250 ml; 16.9 fl oz/500 ml

Powerful yet super-light filler with hyaluronic acid that immediately reduces wrinkles and makes the skin look smoother. Rich in antioxidants and shea butter.

Active Ingredients:

- Hyaluronic acid for smoother-looking skin
- Argan oil and Vitamin E as strong antioxidants
- Shea butter for additional moisturizing and softening



#KSMLF08
Pro Filler
8.45 fl oz/250 ml



#KSMLF16
Pro Filler
16.9 fl oz/500 ml

PRO MOISTURIZER

8.45 fl oz/250 ml; 16.9 fl oz/500 ml

Hand moisturizer with highly concentrated active ingredients to stimulate collagen production. Improves skin elasticity, prevents formation of finelines, and leaves the skin looking younger.

Active Ingredients:

- Peptide complex for younger-looking skin
- Shea butter for continuous hydration
- Argan oil for cell regeneration



#KSMM08
Pro Moisturizer
8.45 fl oz/250 ml



#KSMM16
Pro Moisturizer
16.9 fl oz/500 ml



#KSMBR01
Kinetics SPA Manicure Brochure
15 x 15 cm



#KDFR03
Black Retail Display.
35 x 40 x 170 cm
Sold empty. Products to be ordered separately.

KINETICS SPA PEDICURE

By creating this pedicure line, our aim was to provide our clients with luxury products that are also suitable for problematic feet. We combined ingredients known for their healing effects and gave our products the finest textures. As a final touch, we added our signature perfume from Grasse.



PRO CALLUS GEL

8.45 fl oz/250 ml

Efficient and drip-free callus remover. Formulated with a high concentration of Urea and Lactic acid, it contains no alkali, requires no rinsing, and is safe to use even on sensitive skin. Suitable for diabetics.

Active ingredients:

- Combination of 20% Urea and 5% Lactic acid to soften and remove callused areas
- Aloe vera and Urea for hydrated, softer and smoother skin



#KSPCRG08
Pro Callus Gel
7.6 fl oz/225 ml

PRO CALLUS SPRAY

7.6 fl oz/225 ml

Quickly removes calluses. Unlike other similar products, our product does not contain alkali that can burn the skin, it requires no rinsing and does not irritate sensitive skin.

Active ingredients:

- Lactic acid and 20% Urea spray for quick cuticle and callus removal
- Urea and Aloe vera for hydrated, softer and smoother skin



#KSPCRL08
Pro Callus Spray
7.6 fl oz/225 ml

PRO CREAM PEEL

8.45 fl oz/250 ml; 16.9 fl oz/500 ml

Efficient exfoliator with moisturizing effects due to a combination of finely crushed Volcanic lava particles and Shea butter. Creamy texture works well for massage, leaves no stickiness, and requires no rinsing.

Active ingredients:

- Volcanic lava particles in combination with Lactic acid for efficient yet mild exfoliation
- Shea butter for keeping the skin hydrated for several hours
- Argan oil and Vitamin E as antioxidant and moisturizer to soften dry skin patches
- Fragrance from Grasse for a luxury mood



#KSPCP08
Pro Cream Peel
8.45 fl oz/250 ml



#KSPCP16
Pro Cream Peel
16.9 fl oz/500 ml

PRO LIGHT CREAM

8.45 fl oz/250 ml; 16.9 fl oz/500 ml

Super light daily cream with odorless menthol provides a slight cooling effect and treats tired legs. Absorbs immediately, allowing for wearing shoes right after application. Shea butter leaves feet smooth and silky.

Active ingredients:

- Odorless menthol for a cooling and refreshing effect
- Shea butter for keeping the skin hydrated, providing a smooth and silky feel
- Fragrance from Grasse for a luxurious mood.



#KSPLC08
Pro Light Cream
8.45 fl oz/250 ml



#KSPLC16
Pro Light Cream
16.9 fl oz/500 ml

PRO HEEL CREAM

8.45 fl oz/250 ml; 16.9 fl oz/500 ml

Treats cracked heels. Urea and Caviar lime extract treats small cracks. Shea butter seals the moisture in the skin. Non-greasy – apply and good to go.

Active ingredients:

- Caviar lime improves cell turnover and heals cracked skin and heels;
- 10% Urea for moisturized and soft to the touch skin;
- Argan oil to soften dry skin patches;
- Shea butter for keeping the skin hydrated, providing a smooth and silky feel



#KSPHC08
Pro Heel Cream
8.45 fl oz/250 ml



#KSPHC16
Pro Heel Cream
16.9 fl oz/500 ml

RETAIL PEDICURE LINE

Scientific grade ingredients.
More comfort in use.
Finest textures.

CALLUS SPRAY

5.07 fl oz/150 ml

- Quickly removes calluses.
- Urea & lactic acid removes calluses.
 - Spray covers the entire foot in just seconds.
 - Gentle, no need to rinse off.



#KPECS05
Retail Callus Spray
5.07 fl oz/150 ml

HEEL CREAM

5.07 fl oz/150 ml

- Treats cracked heels.
- Urea and Caviar lime extract treats small cracks.
 - Shea butter seals the moisture in the skin.
 - Non-greasy – apply and good to go.



#KPEHC05
Retail Heel Cream
5.07 fl oz/150 ml

LIGHT-FOOT CREAM

5.07 fl oz/150 ml

- Helps feet feel light.
- Contains caffeine & menthol.
 - Gives refreshing feel.
 - Silky texture is suitable for massage



#KPELC05
Retail Light-foot cream
5.07 fl oz/150 ml

DRY SPRAY

5.07 fl oz/150 ml

- Prevents feet from sweating.
- Salvia prevents feet from sweating for up to 5 hours.
 - Decalact deo reduces odor.
 - Quickly absorbing texture – use and go.



#KPEDS05
Retail Dry Spray
5.07 fl oz/150 ml

ACRYLIC GEL, GEL & ACRYLIC

ACRYLIC GEL, GEL, ACRYLIC & ACCESSORIES



kinetics



ACRYLIC GEL

ACRYLIC GEL LIQUID

Acrylic Gel Liquid is a blend of solvents balanced for optimum sculpting of Acrylic Gel. It has a slow evaporation rate, which allows the time required to sculpt Acrylic Gel extensions for a perfect shape.



#AGL08
Acrylic Liquid
7.6 fl oz/225 ml



#AGBR01
Brush



#AGPT01
Tool



#AGTS01
Squeezer

ACRYLIC GEL

Acrylic Gel is a new generation material that combines the best properties of acrylics and gels.
 Easy – unlimited sculpting time, no running, quick to apply.
 Durable – as strong as acrylics with superior adhesion for up to 3 weeks.
 Safe – no odor, no irritation, less dust than any acrylic or gel system.



| Product Name | Item # | Size |
|--------------------------|--------|---------------|
| Acrylic Gel Clear | AGCL03 | 1 fl oz/30 ml |
| | AGCL06 | 2 fl oz/60 ml |
| Acrylic Gel Clear Pink | AGCP03 | 1 fl oz/30 ml |
| | AGCP06 | 2 fl oz/60 ml |
| Acrylic Gel Builder Pink | AGBP03 | 1 fl oz/30 ml |
| | AGBP06 | 2 fl oz/60 ml |
| Acrylic Gel Soft White | AGSW03 | 1 fl oz/30 ml |
| | AGSW06 | 2 fl oz/60 ml |
| Acrylic Gel Nailfinity | AGNF03 | 1 fl oz/30 ml |
| | AGNF06 | 2 fl oz/60 ml |

GEL & ACRYLIC

EASY GEL

This is a light-consistency, easy-to-sculpt gel for sensitive nail plates. Our superior gel won't burn or irritate nails during application.



| Product Name | Item # | Size |
|-----------------------|--------|--------------|
| Easy Gel Clear | EGCL05 | 0.5 oz/15 g |
| | EGCL20 | 1.76 oz/50 g |
| Easy Gel Pink | EGCP05 | 0.5 oz/15 g |
| | EGCP20 | 1.76 oz/50 g |
| Easy Gel Builder Pink | EGBP05 | 0.5 oz/15 g |
| | EGBP20 | 1.76 oz/50 g |
| Easy Gel Soft White | EGSW05 | 0.5 oz/15 g |
| | EGSW20 | 1.76 oz/50 g |
| Easy Gel Nailfinity | EGNF05 | 0.5 oz/15 g |
| | EGNF20 | 1.76 oz/50 g |

SEALER

Sealer create a perfect high-gloss finish top coat for gel and acrylic extensions.

SUPER SEALER 0.47 fl oz/14 ml

Tack-free, acetone-resistant finishing layer. Contains a slight amount of blue pigment to prevent yellowing.



#ESS05
Super Sealer

BONDER

Bonder creates adhesion between the natural nail plate and the gel product. It acts like double-sided sticky tape between the keratin layers of the natural nail and the gel.

AIR BONDER 0.47 fl oz/14 ml

Requires no curing in UV or LED lamp and provides faster service. Use it on healthy nail plates.



#EAB05
Air Bonder

POLYMER

These truly distinctive colors give the nail high definition when combined with a monomer. These polymers will not crystallize in warm, cold, dry, or humid climates. Polymer Dynamite White creates a sharp, competition-quality French manicure look. The finest blend of particles allows for a self-leveling, smooth application that requires little to no filing.



| Product Name | Item # | Size |
|------------------------|---------|---------------|
| Polymer Absolute Pink | KPAP042 | 1.48 oz/42 g |
| | KPAP168 | 5.92 oz/168 g |
| Polymer Double Pink | KPDP042 | 1.48 oz/42 g |
| | KPDP168 | 5.92 oz/168 g |
| Polymer Crystalline | KPCR011 | 0.38 oz/11 g |
| | KPCR042 | 1.48 oz/42 g |
| | KPCR168 | 5.92 oz/168 g |
| Polymer Dynamite White | KPDW011 | 0.38 oz/11 g |
| | KPDW042 | 1.48 oz/42 g |
| | KPDW168 | 5.92 oz/168 g |
| Polymer Nailfinity | KPNF011 | 0.38 oz/11 g |
| | KPNF042 | 1.48 oz/42 g |
| | KPNF168 | 5.92 oz/168 g |

MONOMER

Kinetics Monomer and Primerless Monomer – less odor, fewer allergic reactions. Low-odor, color-stable, non-yellowing, and vibrant colors.



| Product Name | Item # | Size |
|--------------------|--------|------------------|
| Monomer | KM002 | 2 fl oz/59 ml |
| | KM004 | 4 fl oz/118 ml |
| | KM008 | 8 fl oz/236 ml |
| | KM016 | 16 fl oz/473 ml |
| | KM032 | 32 fl oz/946 ml |
| | KM064 | 64 fl oz/1892 ml |
| Primerless Monomer | KZM002 | 2 fl oz/59 ml |
| | KZM004 | 4 fl oz/118 ml |
| | KZM008 | 8 fl oz/236 ml |
| | KZM016 | 16 fl oz/473 ml |
| | KZM032 | 32 fl oz/946 ml |
| | KZM064 | 64 fl oz/1892 ml |

EXPERT LINE BUILDER GELS

High density product for stability and easy application.
Does not drip on cuticles.
Viscosity allows to achieve extreme shapes.
High resistance.
Excellent for competitions.



Fast Expert Gels

| Product Name | Item # | Size |
|--------------|---------|------|
| Fast Pink | KBGFP15 | 15 g |
| | KBGFP50 | 50 g |
| Fast Clear | KBGFC15 | 15 g |
| | KBGFC50 | 50 g |



Regular Expert Gels

| Product Name | Item # | Size |
|--------------|---------|------|
| Natural Pink | KBGNP15 | 15 g |
| | KBGNP50 | 50 g |
| White | KBGW15 | 15 g |
| Milky White | KBGMW15 | 15 g |
| | KBGMW50 | 50 g |

ACCESSORIES

DEHYDRATOR

DEHYDRATOR 0.47 fl oz/ 14 ml

This chemical dehydrating and cleansing formula eliminates surface oil on the natural nail plate. Applying this product prevents lifting and promotes maximum adhesion of acrylic and gel nail applications.



#KDEH002
Dehydrator
0.47 fl oz/14 ml

DI-TAC CLEANSER

7.6 fl oz/225 ml; 30.43 fl oz/900 ml

The final step for gel applications. Removes sticky residue and leaves a subtle peach fragrance. Also perfect for cleaning gel brushes and removing gel residue from UV bulbs, reflectors, and other surfaces.



#ECL08
Di-Tac Cleanser
7.6 fl oz/225 ml



#ECL30
Di-Tac Cleanser
30.43 fl oz/900 ml

PRIMERS

Primers are used to improve adhesion of the material with the nail plate. Can be used in gel, acrylic, acrylic gel and gel polish systems.



#KPRO5
Primer Acid

PRIMER ACID 0.47 fl oz/ 14 ml

Primer – necessary for creating the ultimate bond between the monomer/polymer structure and the natural nail. It's the best defense against product lifting.



#KPRNA05
Primer Non-Acid

PRIMER NON-ACID
0.47 fl oz/ 14 ml

Primer Non-Acid – allows safe and comfortable application on clients with sensitive skin and nail plates.

ADHESIVES

Nail glues are strong adhesives to adhere nail tips to the natural nail or to glue nail art decorations like gems and rhinestones.



#KBOG07
Brush-on Gel

BRUSH-ON GEL 7 g

Perfect for high-speed tip application and natural nails



#KBOR07
Brush-on Resin

BRUSH-ON RESIN 7 g

Gel consistency, gap-filling adhesive. Perfect for applying tips onto bitten or ridged nails.

BRUSHES & FILES

EXPERT LINE BRUSHES

GEL BRUSH SIZE 6

Suitable for applying both gel and color.



#KELGB06
Gel Brush size 6. Bronze synthetic fibers, ferrule width 6,5 mm, hair length 5,5 mm.

GEL BRUSH SIZE 7

Most suitable for processing acrylic gel.



#KELGB07
Gel Brush size 7. Bronze synthetic fibers, ferrule width 7,5 mm, hair length 6,0 mm.

NAIL ART BRUSH SIZE 2

Suitable for nail art, gel painting and watercolor.



#KELMB02
Nail Art Brush size 2. Kolinsky sable hair, ferrule width 2,1 mm, hair length 6,0 mm.

NAIL ART BRUSH SIZE 10/0

For nail art and gel painting.



#KELMB10
Nail Art Brush size 10/0. Amber synthetic fibers, ferrule width 1,2 mm, hair length 8,0 mm.

LINER SIZE 20/0

Liner brush, suitable for spreading the color under the cuticle and creating very fine lines.



#KELMB20
Liner size 20/0. Kolinsky sable hair, ferrule width 1,1 mm, hair length 7,0 mm.

FLAT BRUSH SIZE 2

One stroke painting brush, can be used both with gel and paint, suitable for French manicure.



#KELFB02
Flat Brush size 2. Bronze synthetic fibers, ferrule width 4,0 mm, hair length 5,0 mm.

UNIVERSAL BRUSH SIZE 2

Natural bristle particularly suitable for acrylic decoration, for plasticine, working with silk acrylic powders.



#KELUB02
Universal brush size 2. Kolinsky sable hair, ferrule width 4,0 mm, hair length 6,0 mm.

UNIVERSAL BRUSH SIZE 4

Natural bristle particularly suitable for acrylic decoration, for plasticine, working with silk acrylic powders.



#KELUB04
Universal brush size 4. Kolinsky sable hair, ferrule width 4,5 mm, hair length 8,0 mm.

EXPERT LINE FILES

HALF MOON FILE 100/180



#KHM100
Half Moon File 100/180.
For acrylic extensions/normal nails. Japanese abrasive paper.

HALF MOON FILE 120/150



#KHM120
Half Moon File 120/150.
For all types of nail extensions, for pedicures. Japanese abrasive paper.

HALF MOON FILE 180/180



#KKHM180
Half Moon File 180/180.
For natural nails. Japanese abrasive paper.

PROFESSIONAL FILE KITS



#KFKKK
File Krazy Kat 150/180 grit
For lower arch and pedicures. Thin emery board.
84 pcs.



#KFK100
File Red Piranha 100/100 grit
For acrylic extensions. Washable, sanitizable.
28 pcs.



#KFK150
File Yellow Alligator 150/150 grit
For gel and acrylic extensions. Washable, sanitizable.
28 pcs.



#KFKZZ
File Zebra Ziggy 120/180 grit
For all types of nail extensions. Japanese abrasive.
28 pcs.



#KFK180
File White Turtle 180/180 grit
For natural nails. Washable, sanitizable.
28 pcs.



#KFKSPO
Sponge File Penguin 240/240 grit
For all types of nail extensions. Sponge file.
10 pcs.



#KFKDD
File Dolphin Dan
Super shiner. For acrylic and natural nails. Buffing file.
21 pcs.



#KFKHH
File Happy Hippo
Super shiner. For acrylic and natural nails. Buffing block.
10 pcs.

IMPLEMENTS & LAMP

IMPLEMENTS

The Kinetics Nail Systems line of implements was created to complement your workstation and deliver high-value services to your customers.



#KNP02
Straight Pusher



#KNP01
Edge Pusher

SALON NAIL FORMS

For gel, acrylic, and acrylic gel nail extensions.



#KFO500
Salon Nail Forms. 500 pcs

LED PRO LAMP

The Kinetics 2-in-1 LED/UV Lamp for professional use has a sensor-activated timer with additional low-heat mode for sensitive nails, which is perfect to avoid burning. Sensor timer has a Memory function – press the chosen time for 2 sec., and the lamp will remember it. Removable cover is perfect for pedicures.

- LED/UV light source
- Sensor-activated timer
- Low-heat mode for sensitive nails
- Removable cover for easy pedicures



#KNLEDUV01
LED Pro Lamp

MARKETING

CATCHY IMAGES, ELEGANT DISPLAYS, BAGS,
AND MORE MARKETING ITEMS TO BRING
THE BRAND VALUE TO OUR CUSTOMERS.



FLOOR DISPLAYS

BLACK RETAIL DISPLAY

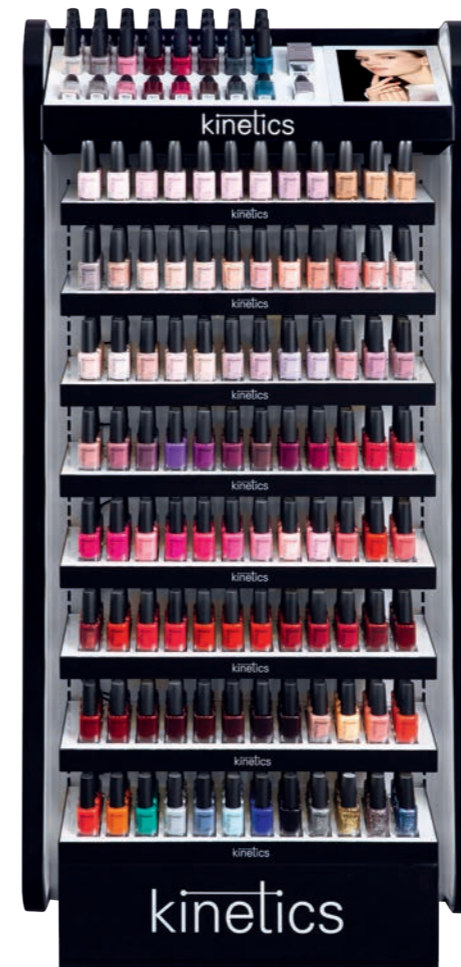
The Kinetics Black Retail Display is an excellent addition to a salon area. The space between the shelves makes it ideal for presenting the line of lotions or other hot Kinetics products.



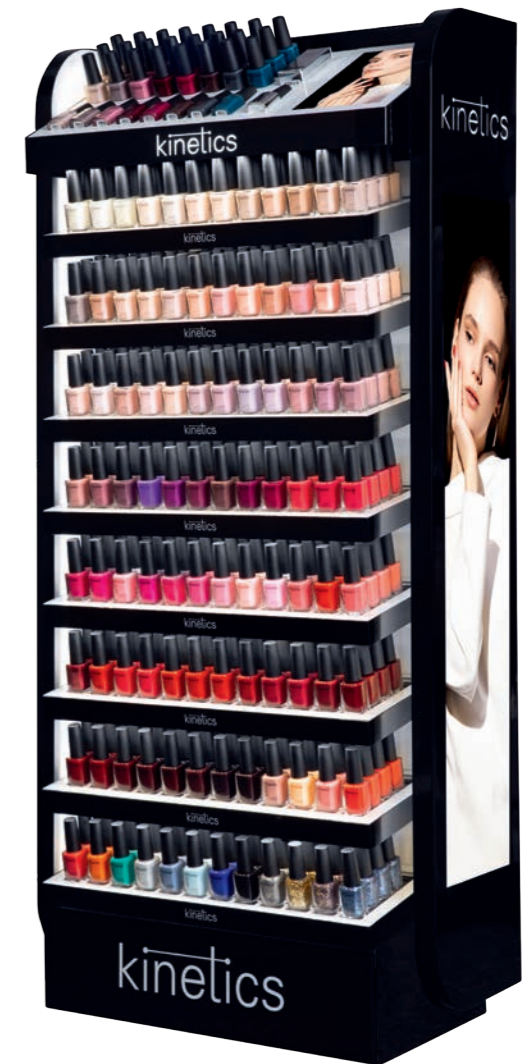
#KDFR03
Black Retail Display.
35 x 40 x 170 cm
Sold empty. Products to be ordered separately.

123 PCS SINGLE-SIDED FLOOR DISPLAY

The Kinetics Floor Display is an excellent single-sided presenter for your salon or retail store. Sleek and luxurious, it holds 96 SolarGel or Shield colors, including the latest seasonal collections.



#KDFR04C
Single-sided Floor Display for nail polish.
64 x 136 x 31 cm (WxHxD)
Sold empty. Products to be ordered separately.



246 PCS DOUBLE-SIDED FLOOR DISPLAY

The Kinetics Floor Display is an excellent double-sided presenter for your salon or retail store. Sleek and luxurious, it holds Kinetics' full line of retail products. The display is variable and adaptable! Just use different shelf trays to set up product presentation exactly the way you want it.



#KDFR04A
 Double-Sided Display for Nail Polish.
 64 x 135 x 50 cm (WxHxD)
 Sold empty. Products to be ordered separately.

167 PCS DOUBLE-SIDED FLOOR DISPLAY

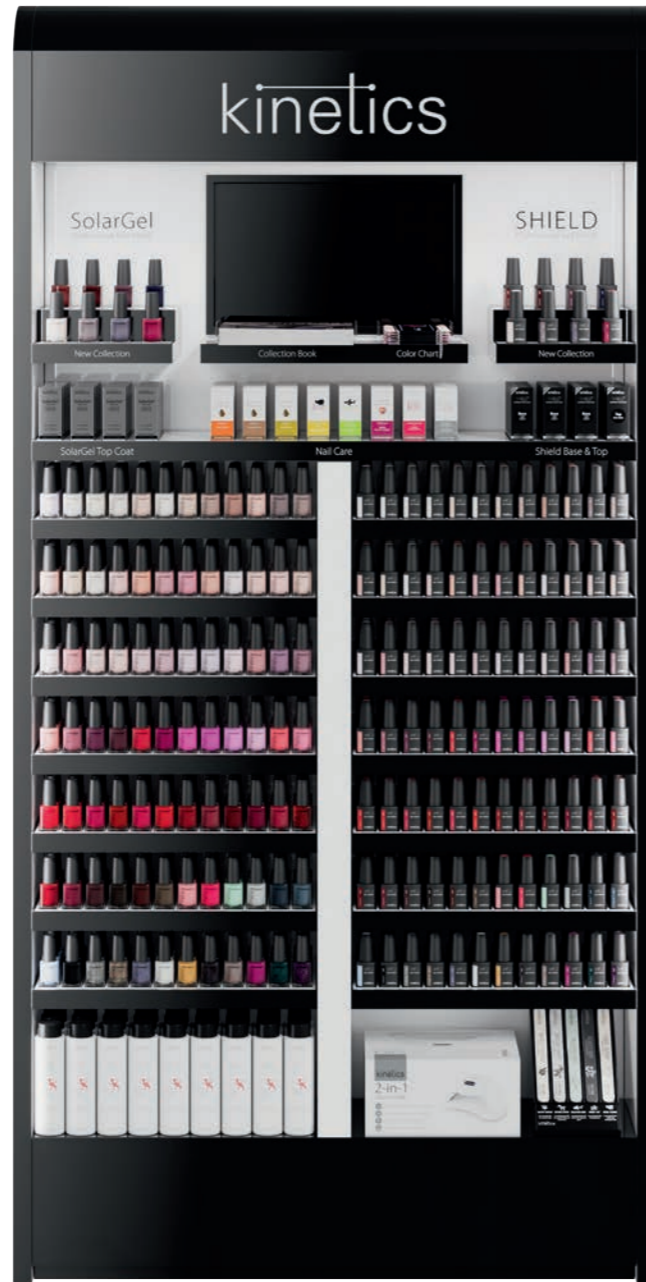
The Kinetics Floor Display is an excellent double-sided presenter for your salon or retail store. It holds 96 SolarGel or Shield colors, including the latest seasonal collections, skin care and nail care products. The display is variable and adaptable! Just use different shelf trays to set up a product presentation exactly the way you want it.



#KDFR04B
 Double-Sided display. One side – polish, other side – skin care.
 64 x 135 x 50 cm (WxHxD)
 Sold empty. Products to be ordered separately.

227 PCS LARGE FLOOR DISPLAY

The Kinetics Large Floor Display is an excellent presenter for retail or professional stores. Elegant and luxurious, in the Kinetics style, it holds 92 Shield and 92 SolarGel colors, including the latest seasonal collections, as well as 8 top sellers of nail care.



#KDFR06A
Large SameColor Display.
100 x 200 x 30 cm (WxHxD)
Sold empty. Products to be ordered separately.

123 PCS LARGE FLOOR DISPLAY

The Kinetics Large Floor Display is an excellent presenter for retail or professional stores. Elegant and luxurious, in the Kinetics style, it holds a full range of Kinetics skin care products and top sellers of nail care, 123 SKU in total.



#KDFR06B
Large Skin & Nail Care Floor Display.
100 x 200 x 30 cm (WxHxD)
Sold empty. Products to be ordered separately.

SALON DISPLAYS

24 PCS SALON DISPLAY

Organize your salon or shop with the Kinetics Salon Display with its sleek, elegant design in an aesthetic black. This display features 6 each of 24 different tones. Use several displays in a row to create a polish wall and show off as many colors as you like.



#KPD24
Salon Display.
30 x 48 x 17 cm (WxHxD)
Sold empty. Products to be ordered separately.

48 PCS SALON WALL DISPLAY

A space-saving, stylish Kinetics Wall Display in sleek, black aesthetics that fits in almost every salon. It features 1 each of 48 different bottles in either Shield or SolarGel. Use several displays to create a polish wall for a rich color presentation.



#KPD25
Salon Wall Display.
44 x 57 x 3 cm (WxHxD)
Sold empty. Products to be ordered separately.



Use several displays in a row to create a polish wall for rich color presentation.



Use several displays in a row to create a polish wall for rich color presentation.

RETAIL SHELF ORGANIZERS

Fits in any store or salon to organize products on the counter. Elegant and simple black acrylic in a modular design – works with SolarGel polish and any nail care item in the box, as well as body lotions and hand creams.

30 PCS POLISH SHELF ORGANIZER



#KRSO11
SolarGel & Shield Organizer.
Holds 5 ea. of 6 SolarGel Colors. Total 30 items.
22 x 6.5 x 22 cm (WxHxD)
Sold empty. Products to be ordered separately.

20 PCS NAIL CARE SHELF ORGANIZER



#KRSO12
Nail Care Product Organizer.
Holds 4 ea. of 5 nail care products. Total 20 items.
22 x 6.5 x 22 cm (WxHxD)
Sold empty. Products to be ordered separately.

12 PCS LOTIONS SHELF ORGANIZER

Attractively designed vacuum counter display holds 12 lotion bottles.



#KRSO13
Lotion Organizer. Holds 3 ea. of 4 lotions. Total 12 items.
22 x 6.5 x 22 cm (WxHxD)
Sold empty. Products to be ordered separately.

10 PCS VACUUM DISPLAY

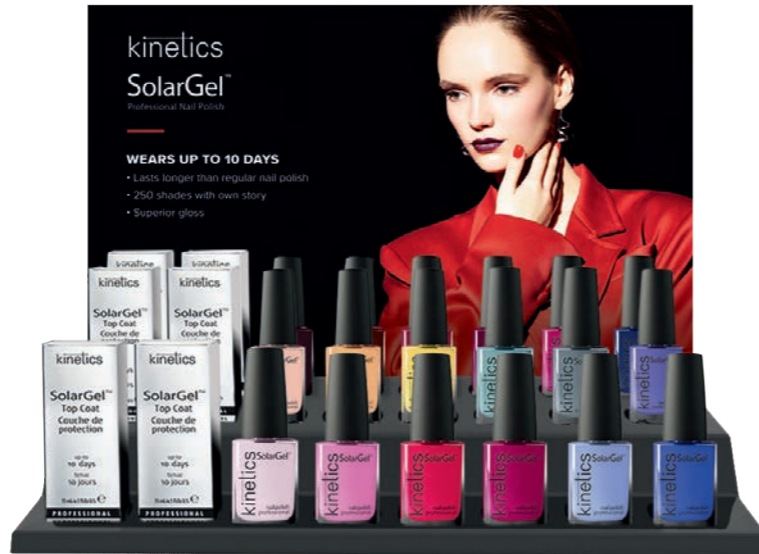
Attractively designed vacuum counter display holds 10 nail polish bottles.



#VD10
SolarGel vacuum display for bottles.
17 x 25 x 15 cm (WxHxD)
Sold empty with headercard. Products to be ordered separately.

18+6 PCS VACUUM DISPLAY

Attractively designed vacuum counter display holds 6 boxes and 18 bottles.



#VD01
SolarGel vacuum display for bottles & boxes with headercard.
35 x 25 x 15 cm (WxHxD)
Sold empty with headercard. Products can be ordered separately

24 PCS VACUUM DISPLAY

Attractively designed vacuum counter display holds 24 nail polish bottles.



#VD02
SolarGel vacuum display for bottles with headercard.
35 x 25 x 15 cm (WxHxD)
Sold empty with headercard. Products to be ordered separately.

24 PCS NAIL CARE VACUUM DISPLAY

Holds a full selection of Kinetics nail care products – oils, serums, coatings, and Nano treatments.



#VD12
Nail care vacuum display for boxes.
35 x 25 x 15 cm (WxHxD)
Sold empty with headercard. Products to be ordered separately.

24 PCS GOLD COLLECTION DISPLAY

Attractively designed vacuum counter display holds 24 Gold Collection boxes.



#VD06
Gold Collection vacuum display with headercard.
35 x 25 x 15 cm (WxHxD)
Sold empty. Products to be ordered separately.

BANNERS, POSTERS & ACCESSORIES

BANNERS

60 x 200 cm



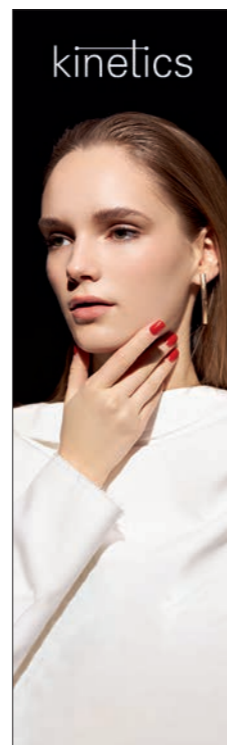
#KBA30
Banner SolarGel & Top Coat



#KBA32
Banner Skin Care



#KBA33
Banner Shield Victory



#KBA37
Banner Kinetics Image



#KBA35
Banner Kinetics SPA

POSTERS

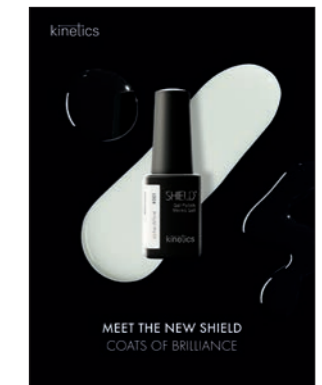
60 x 80 cm



#KPO23
Poster SolarGel & Top Coat



#KPO26
Poster Shield Victory



#KPO58
Poster Shield Beginning



#KPO38
Poster Kinetics Image



#KPO25
Poster Skin Care



#KPO56
Poster Kinetics PRO Manicure



#KPO32
Poster Kinetics PRO Pedicure



#KPO28
Poster Kinetics SPA Textures on White



#KPO29
Poster Kinetics SPA Textures on Black

KINETICS APRON & SHOPPING BAGS



#APR01
Kinetics Apron
Length 100 cm



#KBBG01
Large Shopping Bag
53 x 36 x 18 cm (WxHxD)



#KBBS
Bolsa pequeña y negra Kinetics
22 x 16.5 x 6.5 cm (WxHxD)

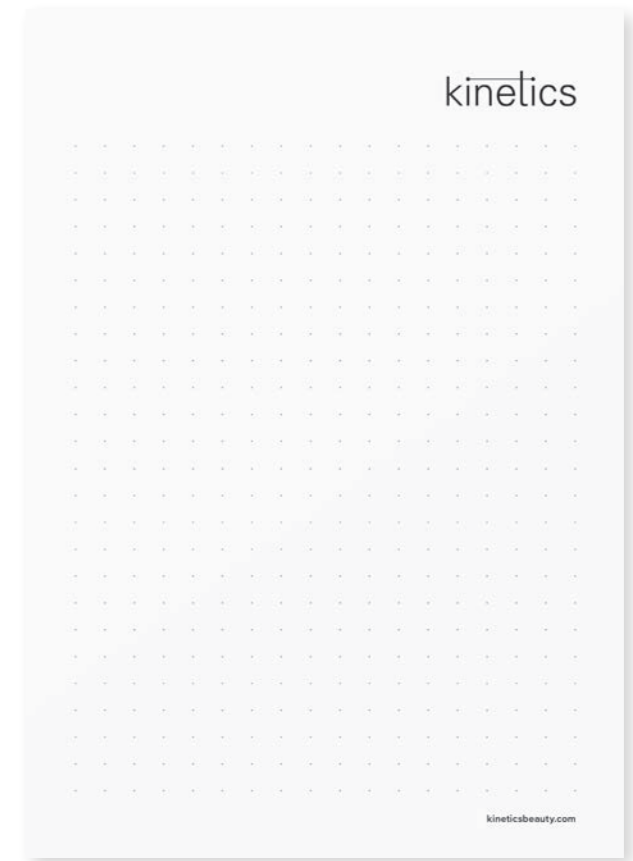


#KBGS
Kinetics Classic Bag
34 x 25 x 9 cm (WxHxD)

PENCIL & NOTEBOOK



#KPENCIL
Kinetics Branded Pencil
Refillable Mechanical Pencil



#KNOTEBOOK
Kinetics Branded Notebook
A5, 50 pages

FB KineticsNails

INST KineticsNails

Item #KCA23EN

Kinetics Nail Systems Ltd.
3K Kurzemes prospekts
Riga, LV-1067, Latvia
Email: info@kineticsbeauty.com

www.kineticsbeauty.com

kinetics