



SHELLEVIS®



PRODUCT SPECIFICATIONS

**SHELLEVIS®
TRAPEZIUM SLABS**




Using the Schellevis® trapezium slabs, you can create quirky straight or round passageways. Their characteristic shape emphasises sight lines in pathways and gives a creative feel to an outdoor space.

The slabs are available in 1200x300/600/80 millimeter. As far as colour is concerned, you can choose between grey and anthracite. With their recognisable traditional Dutch appearance and structure, the trapezium slabs can easily be combined with other products in the Schellevis® range. Combining the best of natural raw materials and colouring agents with a special production process and Dutch craftsmanship gives the trapezium slabs their unique and timeless character. Schellevis® trapezium slabs feel right at home in a number of places: around the outside of the house, on the roof and in public outdoor spaces.

GUIDED BY NATURE

We believe it's important that an outdoor space is well-balanced and exudes tranquillity. Because in a living environment like that, you can relax; you're in your element, enjoying it. Whether alone or together with others. The outdoor space is the Schellevis® domain and nature is a major source of inspiration. We connect architecture with nature, with respect for the environment. That's how we contribute to a sustainable, natural experience of the outdoor space

PRODUCT SPECIFICATIONS SCHELLEVIS® TRAPEZIUM SLABS

LxBxH in mm	Kg	Safe load in a sand bed (kg)	Safe load on 4 corners (kg)**	#slabs per m ²	#slabs per pallet	Pallet size in mm	Colours	Reinforced	Can be used for
1200x300/600x80	98	750	550	1,85	16	2000x1200			

* Safe load permitted per tile in a sand bed of > 200 mm and a wheel surface area of 250x250 mm

** Safe load permitted per tile laid on 4 corners. Minimum size bearing block 30x30x4 mm and wheel surface area of 250x250 mm.

Product features

- Unique Schellevis® structure and appearance
- Products taper (1.5 mm each side)
- No bevel
- Durable due to the use of natural raw materials and colouring agents
- Non-slip
- Resistant to frost and road salt
- Country of origin: The Netherlands
- Material type: Concrete

Technical features

- Dimensional stability (L/B):
≥ 600 mm: ± 3 mm, (D) ± 3 mm
- Dimensional stability – diagonal:
≥ 850 mm: ≤ 6 mm
- Flexural strength: ≥ 5,0 N/mm²
- Wear resistance: ≤ 23
- Environmental class: XF4
- Slip resistance: R13
- Reaction to fire: NPĐ
- Weather resistance (frost/thaw): 0,2 kg/m²

Processing instructions

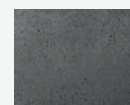
- Both the top and side can be placed in sight since both are provided with the characteristic Schellevis® structure.
- Use joint of at least 5 mm when placing the products. The larger the product, the broader the joint (maximum 10 mm).
- Lay the products on a bed that is stable, level and draining. That way, the products will be well anchored and you will prevent subsidence.
- Don't use a vibrating compacter but use a rubber mallet instead.
- There may be a natural variation in structure or colour in each batch. This variation is due to the production process and is part and parcel of the natural character of the product.
- It's therefore advisable to mix the products from several pallets when processing.

Schellevis® quality

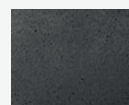
- Tested according to European standards: EN 1339
- NL BSB certificate K20627
- CE certificate and DoP 530
- CSC mark (Concrete Sustainability Council)
- NL Greenlabel



Grey



Anthracite



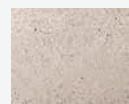
Carbon



Taupe



Red Brown



Cream



SCHELLEVIS®