



PRESSGLASS
ALARM SHIELD



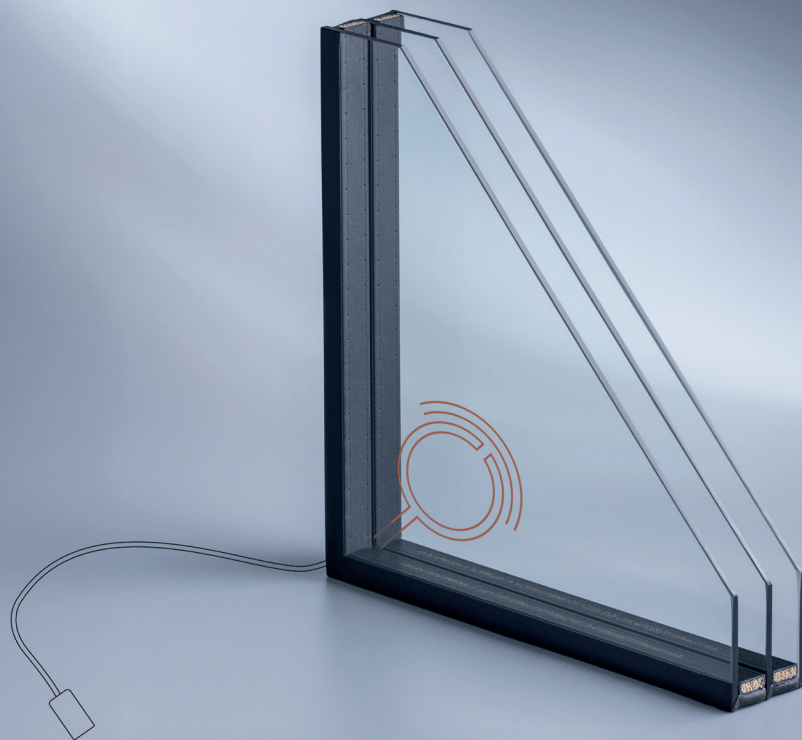
PRESSGLASS
LEADING IN EUROPE

ALARM SHIELD

INSULATED GLASS UNIT WITH ALARM LOOP

www.pressglass.com

AlarmShield glass works by the application of a miniature metallic-enamel screen 'loop', printed onto the surface of the glass. The loop forms a simple electrical circuit connection. These external connections are then permanently hard-wired into the buildings' alarm system. As the substrate is toughened, if the glass is ever broken, it will fragment into hundreds of tiny pieces. The fragmentation will break the metallic enamel loop circuit, interrupting the electrical circuit and immediately triggering the alarm.

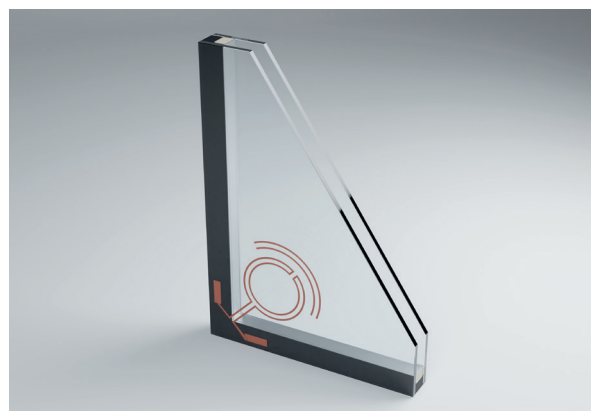


LOOP VARIANTS

On the edge – in the glazed unit, placed on the edge of the glass under the seal. After installation, the loop is hidden in the window frame.



Visible – placed in the corner, similar to the toughened glass identification stamp. The size of the loop is available in two variants.



PRODUCT RANGE

- ESG or ESG HST monolithic panes (float and tinted glass).
- DGU, TGU (glass with alarm loop – ESG glass).
- Glass thickness 4-19 mm.

POSITION IN THE GLAZED UNIT

In both double and triple glazed units, the AlarmShield loop is directed towards the space between the panes. Alarm loops are applied to uncoated glass. In the case of triple glazed units, we suggest the use of the central pane as tempered with the AlarmShield loop.

LOCATION ON THE GLASS – IN A CORNER

The loop can be in any corner where there is no tempered glass mark. The default is the lower edge, the corner opposite the toughened glass stamp.

CONNECTION TO ALARM SYSTEM:

- AlarmShield loop resistance: 0.5-10 Ohm.
- 2 x 0.14 mm² cable, approx. 20 cm long, terminated with a mounting plug.
- 3, 6 or 10 m long mounting wire with matching plugs can be ordered optionally.
- Connecting the mounting wire to the AlarmShield glass ensures a permanent connection in the frame, with IP67 protection. The plug connectors are additionally gold-plated for reliable and stable operation.

BENEFITS OF ALARM GLASS SECURITY

AlarmShield glass is a class C alarm device, providing excellent protection regardless of changing environmental conditions, all year round.





We constantly modify our manufacturing processes and change habits to limit the negative effect on the environment. In order to facilitate the changes, we have adopted ISO 14001, the worldwide management system for environmental protection.

We kindly request you to minimize the negative effect of this leaflet on the environment by using it multiple times. Please recycle the used leaflet, using the waste sorting method. Thanks to that, the materials can be used again.

Paper has always been and will always be a vital aspect of project and marketing activities. The selection of paper produced in accordance with sustainable development and environmental protection (FSC certificates) and/or recycled paper is becoming a key issue.

Our plants and products are audited or certified by acknowledged certification bodies, including:

BCCA, BSI, CQC, ICiMB, IFT, IGMA, KIWA, RISE, UKAS and WarringtonFire.

This leaflet is for information purposes only and does not constitute a commercial offer.

We make every effort to ensure that presented publication contained current information as of the date of print. Due to the continuous development of our product range may differ from market to market. Product's availability should always be confirmed with Sales Department.

