



# JOALI BEING

-BODUFUSHI-

JOALI BEING provides a destination created for sojourners seeking the opportunity to improve their health and wellbeing.

We invite those who share this common ideology for wellbeing, to pursue their aspirations with us. With this, it is recommended that alcohol is not consumed in line with our wellbeing mandate. A carefully curated selection of organic/biodynamic premium brands with lower alcohol, sugar and calorie content are available in a moderate approach and available upon request.

JOALI BEING is committed to providing memorable wellbeing experiences. To preserve the privacy of everyone at our retreat, we encourage guests to limit their use of cell phones, laptops, or other smart devices in common areas, reconnecting with self, each other, and nature as you embark on your wellbeing journey.

All restaurants and outlets at JOALI BEING are a smoke-free environment.

We believe that each guest wishes to preserve the sanctity and tranquillity of JOALI BEING.



## The Four Pillars

Whilst each recipe has been curated to nourish all of the four pillars, highlighted icons indicate those that contain elements to enhance specific pillars

### MIND

The Mind is responsible for thinking, feeling, and making choices, as well as directing our emotional, psychological, and social wellbeing.

Our mind is the gravitational field that determines how we express ourselves, handle stress and relate to others.

### MICROBIOME

Referred to as the second brain, the gut's Microbiome plays a key role in human health by breaking down and absorbing nutrients and strengthening the immune system.

When the gut is healthy, the other pillars thrive.

### SKIN

Skin is the largest body organ with its own microbiome. By focusing on the skin health, we nurture the body, restore natural beauty and reverse ageing, impacting many areas of life, including self-confidence.

### ENERGY

Energy is a journey of the body, expanding through conscious movement. This pillar reflects how we sustain and renew physical energy to have the capacity to keep thriving. Regular intervals of self-care, restoration, and recovery help to re-energise ourselves, even during high-paced periods.



## WATER

JOALI BEING offers a selection of purified and infused water. Infused water is believed to offer several health benefits. It can help slow down the ageing process, maintain the pH levels of the body, and prevent various chronic diseases by neutralising acid levels in the body.

### INFUSED

10

Pineapple, Lemon, Orange  
Lemon Lime, Lemongrass, Grapefruit



### COCONUT WATER

12

Rich in potassium, and natural electrolytes.  
Refreshingly hydrating

### STILL

Acqua Panna  
Voss

14

16

### SPARKLING

San Pellegrino  
Voss Sparkling

14

16

## PREBIOTIC & PROBIOTIC

Microbiome is the community of micro organisms living in our gut, that supports digestion. Our Kombucha is the vital source that supports our gut health.

### KOMBUCHA

14

Raspberry Lemonade, Ginger Lemon  
Crisp Apple, Mango Passion, Peach, Wild Berry  
Cherry Plum, Passion Fruit  
09 - 13 Kcal | 5.3 g - 5.6 g carbs | 0 g protein | 0 g fat



### HOMEMADE TEPACHE

17

Pineapple Skin, Brown Sugar, Cinnamon, Ginger  
Mesoamerican traditions live on in Mexico's vibrant streets.

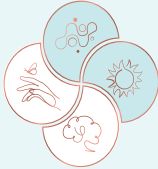


# JUICES & VITAMINGLES

## Fresh and Healthy Blends

25

Nutrient-rich beverages to help nourish you throughout the day. Crafted with an intention to revitalise and refresh, the selection helps with energy boosts, aids replenishment of electrolytes in tropical weather.



### HEARTBEAT

Kale, Orange, Apple, Beetroot, Banana

Fatigue-fighting, antioxidant-rich, brain boosting.

145 Kcal | 32 g carbs | 3 g protein | 1 g fat

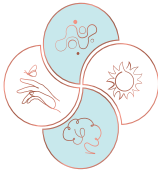


### WAKE UP CALL

Beetroot, Green Apple, Ginger, Carrot, Coconut Water

Hydrating, replenishes electrolytes, promotes healthy skin.

129 Kcal | 24 g carbs | 3 g protein | 1 g fat

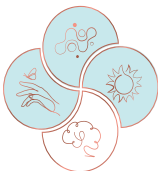


### MORNING GLORY

Apple, Pear, Pineapple Spinach

Digestion stimulating, antioxidant-rich and immune supportive.

168 Kcal | 36 g carbs | 2 g protein | 1 g fat



### GREEN STIMULANT

Chia Seed, Spirulina Powder, Almond Milk, Banana, Spinach

Energy balancing, antioxidant-rich and brain boosting.

211 Kcal | 9 g carbs | 9 g protein | 15 g fat



### WEIGHTLESSNESS

Apple, Grapefruit, Carrot

Liver supportive, skin nourishing and energy boosting.

146 Kcal | 23 g carbs | 2 g protein | 1 g fat

# JUICES & VITAMINGLES

## Fresh and Healthy Blends

25



### COOLER

Apple, Cucumber, Parsley, Celery, Kale, Coconut Water  
Anti-oxidant rich, hydrating, and improves kidney health.  
102 Kcal | 23 g carbs | 2 g protein | 1 g fat



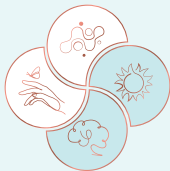
### BE FIT

Orange, Apple, Beetroot, Strawberry  
Reviving, brain supportive, antioxidant rich.  
121 Kcal | 27 g carbs | 2 g protein | 1 g fat



### GOOD MOVING

Orange, Apple, Watermelon, Lemon  
Hydrating, improves kidney health and blood circulation.  
139 Kcal | 31 g carbs | 2 g protein | 1 g fat



### MINDFULNESS

Carrot, Moringa, Spinach, Celery  
Helps reduce sugar cravings, hydrating and replenishes electrolytes.  
25 Kcal | 46 g carbs | 1 g protein | 1 g fat

## FRESHLY SQUEEZED

22

We offer a wide array of freshly squeezed juice from mindfully sourced fruits, vegetables and herbs. Juices are a rich source of essential nutrients and energy.

### FRUITS

Apple  
Pineapple  
Mango  
Watermelon  
Honeydew  
Kiwi

### VEGETABLE

Cucumber  
Carrot  
Beetroot  
Tomato  
Celery  
Broccoli

### HERBS

Mint  
Basil  
Coriander  
Dill  
Kale  
Spinach

## HOT BEVERAGES

*All our coffees are sustainably sourced.*

|                      |    |
|----------------------|----|
| Espresso             | 9  |
| Macchiato            | 11 |
| Americano            | 12 |
| Mocha                | 12 |
| Cappuccino           | 12 |
| Turmeric Latte       | 16 |
| Magical Matcha Latte | 16 |
| Blue Moon Latte      | 16 |

## COLD BREW COFFEES

|                       |    |
|-----------------------|----|
| Chilled Coffee        | 12 |
| Cappuccino            | 12 |
| Latte                 | 14 |
| Coconut Vanilla Latte | 14 |
| Mocha Latte           | 14 |



## REFRESHTEA

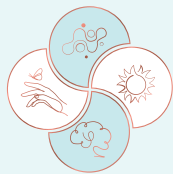
Refreshtea is an aesthetic extension of Sai tea offerings, served cold. This replenishes the essential nutrients and revitalises the energy.

**BLOOM N BREW**

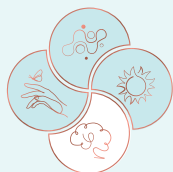
7 Treasures Tea, Vanilla, Lime  
30 Kcal | 7 g carbs | 0 g protein | 0 g fat

**EVER AFTER**

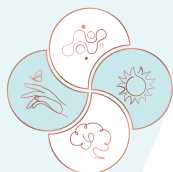
Bora Bora and Karkady Tea Blend, Strawberry, Mint Leaves  
35 Kcal | 9 g carbs | 0 g protein | 0 g fat

**JOY IN SAVOURY**

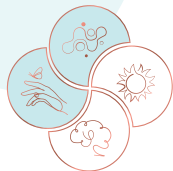
Pure Rooibos Organic Tea, Grapefruit, Lemongrass  
90 Kcal | 23 g carbs | 1 g protein | 0 g fat

**OO LONG STORY**

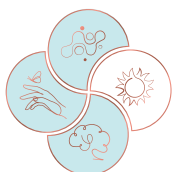
Thai Sticky Rice Oolong, Coconut Milk, Mango, Lemon  
25 Kcal | 7 g carbs | 0 g protein | 0 g fat

**ALL ABOUT THYME**

Russian Samovar Blend, Thyme Honey, Lemon  
70 Kcal | 17 g carbs | 0 g protein | 0 g fat

**LUSH ASSAM**

Assam Tonganagaon, Lemongrass, Ginger  
Kaffir Lime, Lime  
35 Kcal | 9 g carbs | 0 g protein | 0 g fat

**IN MATCHA WE TRUST**

Matcha Genmaicha Green Tea, Kaffir Lime Leaves, Lime  
35 Kcal | 9 g carbs | 0 g protein | 0 g fat

MOCKTAILS

**ISLAND IDYLL**

Pineapple & Mint Cordial, Soda Water

Rich in vitamin C, antioxidants, and aids digestion while promoting relaxation.

*A beach day. A beach week. A beach life? Sounds perfect.*

**FIRE DANCER**

Sage Syrup, Grapefruit Juice, Fire Water, Aquafaba

Supports digestion, boosts vitamin C, and offers anti-inflammatory benefits.

*Feel the heat, feel the beat. Invite the flame into your heart.*

**FLIGHT OF FANCY**

Coconut Water, Lime Juice, Toasted Rice Syrup, Mint Leaves

Hydrates naturally, supports digestion, and provides a refreshing balance.

*Along the coast, a secret spot. The origin of my island dream.*

## ICONIC INFUSIONS

17

Our ICON mocktails are inspired by the harmony of nature and wellbeing. Crafted with the finest ingredients, these pure and vibrant blends reflect the creativity of our mixologists, offering a refreshing journey for the senses.

### **BOOCH BIOME**

Sober Spirits Gin, Lemon, Wild Berry Kombucha, Lemongrass  
Supports healthy digestion and anti-bacterial aids.

### **NATURAL SAI-TAI**

Seedlip Spice 94, Brazilian Mate-Sweet Orange Tea, Pineapple Juice, Lemon Juice  
Anti-oxidant rich and supports immunity.

### **INFINI-TEA DREAM**

Seedlip Garden 108, Cinnamon, Lemongrass, Lime Juice, Chamomile Tea  
Calming properties, nourishes microbiome and supports healthy digestion.

### **GARDEN DREAM**

Strawberries, Basil Leaves, Apple Cider Vinegar, Soda Water, Black Pepper  
Supports immunity and digestion, eases inflammation, balances blood sugar.

### **MY COCO-LADA**

Coconut Water, Fresh Pineapple Juice, Toasted Rice Syrup, Lemon Juice, Aquafaba  
A generous dose of vitamins B, C and E, along with “good fats” for the body.

## **MATCHA WHIP**

Pandan Syrup, Lemon Juice, Coconut Water, Matcha Foam

Rich in antioxidants, particularly catechins, to support metabolism, focus and energy.

## **EASY BREEZY**

Chamomile Tea, Pandan Syrup, Lemon Juice

Calming and relaxing, with a generous dose of antioxidants and vitamin C.

## **HERB SPARKLE**

Lemongrass & Basil Cordial, Sparkling Water

Supports digestion and immunity, reduces inflammation, offers antioxidants.

## **SP-ICED BREW**

Cold Brew, Spiced Syrup, Lemon Juice, Tonic Water

A natural energy boost, along with vitamin C, antioxidants and digestive support.

## **GINGER TEA SOUR**

Jasmine Tea, Simple Syrup, Ginger Juice, Aquafaba, Lemon Juice

Alleviates inflammation, aids digestions, provides vitamin C and antioxidants.

## HER SELECTION OF JOALI BEING

24

### COCKTAILS

#### BIRDS OF PARADISE

The Botanist Islay, Elderflower Liqueur, Lemon Juice,  
Pandan Syrup, Aquafaba

*My island dream takes flight...up, up and away!*

#### JUNGLE CANOPY

Diplomatico Reserva Exclusiva, Banana & Cumin Oleo, Aquafaba

*In the shade of the banana tree, I plan my next adventure.*

#### SPICED PALOMA

Don Julio Blanco, Pink Grapefruit Liqueur, Sage Syrup,  
Grapefruit Juice, Fire Water

*Earth, fire, water...the elements sing, my heart glows.*

Our ICON cocktails are a celebration of craftsmanship and nature, blending premium ingredients with creative flair. Each sip unveils a harmonious balance of flavour, offering a moment of indulgence and inspiration.

### **SAILING DAY**

Pisco Demonio de los Andes Quebranta,  
Alois Lageder Estate Pinot Grigio, Lemon Juice, Aquafaba, Raspberries

### **SUNSET SPRITZ**

Chamomile Aperol, Lychee Liqueur, Bottega,  
Organic Prosecco, Soda Water

### **TEA-KI BRIGHT**

Plantation Stiggins' Fancy Pineapple, Averna, Lime Juice,  
Lapsang Souchong Tea, Creole Bitters, Spiced Syrup

### **MARITIME MARTINI**

The Botanist Islay, Dolin Vermouth Dry, Olive Bitters,  
Miso-Soy Blend, Herb Oil

### **PARADISE FOUND**

Cachaça, Cacao Blanc, Lemon Juice, Pandan Syrup, Coconut Water

### **BELLINI ROMANCE**

Hennessy VS, Peach Liqueur, Mirin, Cattier Brut Icône, Açai Foam

### **ISLAND ECLIPSE**

Ciroc, Peach Liqueur, Lemon Juice, Kefir Syrup,  
Aquafaba, Charcoal Solution

### **AVIATION G&T**

Aviation Gin, Grapefruit Juice, Purple Basil,  
Citrus Oil & Tea, Mediterranean Tonic

### **EL AMOR DE MALDIVAS**

Jose Cuervo Silver, Tamarind, Kaffir Lime, Palm Sugar,  
Maldivian Chilli

### **JOALI BEING CONNECTION**

Hennessy VSOP, Grand Marnier, Honey, Ginger,  
Cattier Brut, Sage

## CLASSICS

25

Classic cocktail is defined as a cocktail that was officially introduced to the world after 1887 when Jerry Thomas' Bartender's Guide was published.

### **MARGARITA**

Patrón Silver, Cointreau, Lime Juice

### **MARTINI**

Monkey 47, Vermouth, Olives

### **NEGRONI**

Bombay Sapphire, Martini Rosso, Campari

### **APEROL SPRITZ**

Aperol, Prosecco, Soda Water

### **MANHATTAN**

Maker's Mark, Martini Rosso, Angostura Bitter

### **MINT JULEP**

Woodford Reserve, Mint Leaves, Simple Syrup

### **DAIQUIRI**

Bacardi Carta Blanca Superior, Simple Syrup, Lime Juice

### **PIÑA COLADA**

Plantation 3 Stars Artisanal, Pineapple Juice, Coconut Cream

### **MOJITO**

Bacardi Carta Blanca Superior, Mint Leaves, Lime

### **BLOODY MARY**

Grey Goose, Tomato Juice, Tabasco, Worcestershire Sauce

### **WHITE RUSSIAN**

Beluga Noble, Coffee Liqueur, Cream

### **COSMOPOLITAN**

Belvedere, Cointreau, Lime Juice, Cranberry Juice

## BEER

### NON-ALCOHOLIC

Heineken 0.0%, Netherlands 10

### ALCOHOLIC

Heineken, Netherlands 12

Carlsberg, Denmark 12

Tiger, Singapore 12

Hoegaarden, Belgium 14

Kirin Ichiban, Japan 14

Asahi, Japan 15

Sapporo, Japan 15

Corona, Mexico 15

## GIN

30ML

Bombay Sapphire London Dry Gin, England 13

Monsieur Gin, France 14

Tanqueray London Dry Gin, Scotland 14

The Botanist Islay Dry Gin, Scotland 14

Gin Mare Mediterranean Gin, Spain 14

Citadelle Gin, France 14

Tanqueray No. Ten Gin, Scotland 16

The Bitter Truth Pink Gin, Germany 16

Hendrick's Gin, Scotland 16

Sipsmith London Dry Gin, England 16

Hapusa Himalayan Dry Gin, India 16

Roku Craft Gin, Japan 16

Aviation American Gin, USA 18

Herno Pink Btl Gin, Sweden (organic) 20

Invictus, Maredsous Distillery, Belgium (organic) 20

The Kyoto Distillery 'Ki No Bi' Kyoto Dry Gin 20

Matsui 'The Hakuto' Premium Gin, Japan 20

Monkey 47 Schwarzwald Dry Gin, Germany 26



**TEQUILA****30 ML****BLANCO**

|                    |    |
|--------------------|----|
| Jose Cuervo Silver | 12 |
| Patrón Silver      | 15 |
| 1800 Blanco        | 16 |
| Don Julio Blanco   | 18 |
| Clase Azul Plata   | 45 |

**REPOSADO**

|                      |    |
|----------------------|----|
| Jose Cuervo Reposado | 13 |
| Patrón Reposado      | 17 |
| Don Julio Reposado   | 18 |
| 1800 Reposado        | 18 |
| Clase Azul Reposado  | 38 |

**AÑEJO**

|                       |     |
|-----------------------|-----|
| Patrón Añejo          | 18  |
| Don Julio Añejo       | 20  |
| Don Julio Extra Añejo | 55  |
| Clase Azul Añejo      | 205 |

**CELEBRITY EDITION**

|                                 |    |
|---------------------------------|----|
| Casamigos Añejo, George Clooney | 22 |
| 818 Añejo, Kendall Jenner       | 22 |
| Cincoro Añejo, Michael Jordan   | 30 |

## VODKA

30 ML

|                                     |    |
|-------------------------------------|----|
| Russian Standard Original, Russia   | 12 |
| Madame Organic Quinoa Craft, France | 14 |
| Absolut, Sweden                     | 14 |
| Skyy, USA                           | 14 |
| Beluga Noble Russian, Russia        | 20 |
| Belvedere, Poland                   | 20 |
| Ciroc Snap Frost Grape, France      | 20 |
| Grey Goose, France                  | 22 |
| Crystal Head, Canada                | 28 |

## COGNAC / ARMAGNAC

30 ML

|                                  |     |
|----------------------------------|-----|
| Pierre Ferrand 1er Cru Grande    | 12  |
| Remy Martin V.S.O.P. Fine Cognac | 14  |
| Delord XO Bas                    | 14  |
| Martell V.S. Fine Cognac         | 14  |
| Hennessy V.S.                    | 16  |
| Hennessy Privilege V.S.O.P.      | 18  |
| Courvoisier XO Imperial Grande   | 35  |
| Remy Martin XO Fine Cognac       | 35  |
| Martell XO                       | 42  |
| Hennessy XO                      | 43  |
| Richard Hennessy                 | 835 |
| Louis XIII de Remy Martin Grande | 846 |

**RUM****30 ML****WHITE**

|   |    |
|---|----|
| Plantation 3 Stars Artisanal, The Caribbean | 12 |
| Bacardi Carta Blanca Superior, Puerto Rico  | 13 |

**DARK**

|   |    |
|---|----|
| Captain Morgan Dark Rum, Jamaica        | 12 |
| Captain Morgan Original Spiced, Jamaica | 13 |
| Bacardi Carta Oro Superior              | 13 |
| Goslings Black Seal Rum, Bermuda        | 14 |

**AGED**

|   |     |
|---|-----|
| Plantation XO 20th Anniversary, Barbados          | 14  |
| Ron Matusalem Gran Reserva 23, Dominican Republic | 14  |
| Botran 15 Year Old Reserva Añejo Rum, Guatemala   | 14  |
| Plantation Barbados, Caribbean                    | 15  |
| Pyrat XO Reserve Rum, Caribbean                   | 16  |
| Trois Rivieres Agricole, Martinique               | 16  |
| Plantation, Jamaica                               | 18  |
| Diplomático Reserva Exclusiva, Venezuela          | 20  |
| Ron Zacapa Centenario Solera 23, Guatemala        | 21  |
| Flor de Caña Centenario 25, Nicaragua             | 24  |
| Flor de Caña 18 Years Old Centenario, Nicaragua   | 24  |
| Angostura 1787, 15 Years, Trinidad and Tobago     | 28  |
| Ron Zacapa Centenario XO Solera, Guatemala        | 35  |
| Havana Club 15 Años Gran Reserva, Cuba            | 48  |
| El Dorado 25 Years Old Vintage, Guyana            | 175 |

## WHISKY / WHISKEY

30 ML

### SINGLE MALT SCOTCH

|  |     |
|--|-----|
| Isle of Jura Distillery 10 Years         | 12  |
| Ardbeg 10 Years                          | 14  |
| Laphroaig 10 Years                       | 14  |
| Benromach 2010 Contrasts                 | 14  |
| Auchentoshan Three Wood                  | 16  |
| Glenlivet 12 Years                       | 18  |
| Glenfiddich 12 Years                     | 18  |
| Isle of Jura Distillery 18 Years         | 25  |
| Glenlivet 15 Years                       | 25  |
| Dalwhinnie 15 Years                      | 28  |
| Caol Ila 2013 Signatory Vintage          | 30  |
| Auchentoshan Limited Release 21 Years    | 35  |
| Talisker 18 Years                        | 40  |
| Macallan 12 Years                        | 42  |
| Lagavulin 16 Years                       | 45  |
| The Macallan Double Cask 15 Years        | 55  |
| The Balvenie Pedro Ximenez Cask 18 Years | 70  |
| The Macallan 18 Years Double Cask        | 120 |
| The Macallan, Rare Cask, Black           | 130 |
| Laphroaig Cask Strength 25 Years         | 145 |

### BLENDED SCOTCH

|                            |    |
|----------------------------|----|
| Johnnie Walker Black Label | 14 |
| Ballantine's               | 14 |
| J & B Rare Blended Scotch  | 16 |
| Chivas Regal 12 Years      | 18 |
| Chivas Regal Mizunara      | 20 |
| Johnnie Walker Blue Label  | 48 |
| Royal Salute 21 Years      | 51 |
| Chivas Regal 25 Years      | 62 |

### INDIAN WHISKEY

|                    |    |
|--------------------|----|
| Rampur Double Cask | 16 |
| Amrut Fusion       | 18 |

**WHISKY / WHISKEY****30 ML****JAPANESE SINGLE MALT WHISKY**

|  |     |
|--|-----|
| Matsui Shuzo, The Kurayoshi, 12 Year Old Pure Malt | 40  |
| Matsui Shuzo, The Matsui, The Peated               | 42  |
| Matsui Shuzo, The Matsui, Sakura Cask              | 42  |
| Nikka Yoichi                                       | 48  |
| Matsui Shuzo, The Kurayoshi, 18 Years              | 65  |
| Suntory Hakushu, 12 Years                          | 95  |
| Suntory Yamazaki, 12 Years                         | 110 |
| The Yamazaki, 18 Years                             | 470 |

**JAPANESE BLENDED WHISKY**

|                             |    |
|-----------------------------|----|
| Nikka Taketsuru Pure Malt   | 20 |
| Yamazakura Blended Whisky   | 38 |
| Suntory Toki Blended Whisky | 42 |
| Togouchi 15 Years           | 50 |
| Mars Maltage Cosmo          | 56 |

**IRISH WHISKEY**

|                       |    |
|-----------------------|----|
| Jameson Irish Whiskey | 14 |
| Tullamore Dew         | 15 |

**FRENCH WHISKY**

|                         |    |
|-------------------------|----|
| Max & O Whisky          | 12 |
| Monsieur Fernand Whisky | 14 |

**AMERICAN & BOURBON WHISKEY**

|                                    |    |
|------------------------------------|----|
| Bulleit American Straight Rye Mash | 12 |
| Jim Beam                           | 13 |
| Jack Daniels                       | 14 |
| Maker's Mark                       | 16 |
| Woodford Reserve                   | 16 |
| Willett Pot Still Reserve          | 22 |
| Blanton's                          | 28 |
| Basil Hayden's                     | 32 |

## LIQUEUR

30 ML

|                      |    |
|----------------------|----|
| Bailey's Irish Cream | 10 |
| Kahlúa               | 10 |
| Amaretto Roral Conti | 10 |
| Grand Marnier        | 13 |
| Cointreau            | 13 |
| Yeni Raki            | 13 |
| Limoncello           | 13 |
| Villa Cardea Sambuca | 13 |
| Chartreuse Green     | 15 |
| Chartreuse Yellow    | 15 |
| Jägermeister         | 16 |

## PORT & SHERRY

30 ML

|                              |    |
|------------------------------|----|
| Cockburn's Fine Tawny Port   | 15 |
| Cockburn's Fine Ruby Port    | 15 |
| Lustau Solera Reserva Fino   | 25 |
| Lustau Solera Resrva Oloroso | 25 |

## APÉRITIFS

30 ML

|                |    |
|----------------|----|
| Ricard         | 13 |
| Pernod         | 13 |
| Aperol         | 16 |
| Campari        | 16 |
| Martini Dry    | 16 |
| Martini Bianco | 16 |
| Martini Rosso  | 16 |

## SAKE

An alcoholic beverage made from rice through fermentation and filtration. For fermentation of sake, rice koji, a kind of fungi grown on rice, is used. Sake has been made for over 1,000 years all over the Japanese islands. Served in Tokkuri (120ml) or in a full Botoru and can be enjoyed either cold or warm.

### SPARKLING SAKE

Pure sparkling sake using the classic method.

Sa Kén Sake Methodo Classico

### TOKKURI

### BOTORU

210

### JUNMAI

Pure rice sake, no minimum polishing, no additives have been added.

Hakutsuru Junmai 720 ml

25

100

Zuiyo Honjun Junmai 720 ml

30

155

Eisen Junmai 1800 ml

30

255

### JUNMAI GINJO

60% polished, pure rice wine without added alcohol.

Amabuki Omachi Junmai Ginjo 720 ml

30

140

Jozen Mizuno Jukusei Junmai Ginjo 720 ml

30

140

Ginrei Gassan Jukusei Junmai Ginjo 720 ml

30

140

Cowboy Yamahai Junmai Ginjo Genshu 720 ml

35

185

Heavensake Junmai Ginjo 720 ml

50

235

### JUNMAI DA-IGINJO

50% polished, with distilled alcohol added.

Kiku-Masamune Junmai Daiginjo 720 ml

30

145

Bizen Omachi Junmai Daiginjo 720 ml

35

185

Tenpyo Genshu Tosatsuru Daiginjo 500 ml

330

Heavensake Junmai Daiginjo 720 ml

500

Takashimizu Wacho Daiginjo 720 ml

515

### FLAVOURED SAKE

Fruit infused sake.

Choya Umeshu 720 ml

12

150

### SHOTTO

### BOTORU

### SOCHU

Japanese traditional hard liquor, distilled spirits made from grains and vegetables.

Beniotome Goma Sochu 720 ml

12

205

Ichiko Frasco Shochu 720 ml

15

300

