

DONGAR PRO

CABLE PACK: PMA-01



TABLE OF CONTENTS

How it works	1
What's included	2
Selecting your wiring harness	3
Determining your installation method	4
Installation instructions	4
Dome light cavity installation	4
Rearview mirror installation for shrouded mirrors	5

HOW IT WORKS

The **Dongar PRO** is the first and only parking-mode-enabled plug & play dash cam adapter. It utilizes power already flowing through the front of your vehicle for an easy, invisible, and truly plug & play dash cam setup – no messy hanging wires and no complicated fusebox installation.



1 IGNITION MODE (IGN)

Adapter only supplies power when your vehicle is on. It will not provide power when the vehicle is off.

2 CONTINUOUS MODE (∞)

Adapter will continue to provide power when the vehicle is switched off until the low voltage threshold is met.

3 TIMED MODE (T)

Adapter will continue to provide power for up to 4 hours when the vehicle is switched off, or until the low voltage threshold is met (whichever occurs first).

NOTE: Vehicle must be [ON] to activate Continuous (∞) or Timed (T) mode.

SOLID RED

Vehicle is [ON], PRO is set to any mode. PRO is providing power via USB-C.

BLINKING RED

Vehicle is [OFF], PRO is set to Continuous (∞). Power provided until low voltage threshold is met.

BLINKING GREEN

Vehicle is [OFF], PRO is set to Timed (T). Power provided until low voltage threshold is met or 4hr timer has elapsed.

BLINKING BLUE

PRO has detected a shutdown event. Examples below.*

*Examples of shutdown events:

- PRO is in Ignition Mode and the vehicle has been turned off
- PRO is in Timed Mode and has reached the 4 hour timer
- Low voltage threshold has been met in any mode
- Overvoltage or overcurrent was detected and the PRO has shutdown for safety

WHAT'S INCLUDED

A - PRO USB MODULE

Transfers power from your wiring harness to your dash cam. Compatible with all USB devices via included cable (Item B).



B - SHORT USB CABLE

Connects your dash cam to the Dongar USB Module.



C - WIRING HARNESES (2)

Transfers power from your vehicle to the PRO USB Module, then to your dash cam—all while preserving OEM functions.

You will only need to use one (1) of the wiring harnesses. To confirm which to use, see compatibility chart: **page 3**.



Harnesses 5A and 5C (Labeled accordingly)

The included 5-Pin harnesses are for dome light cavity installation only. They can be used in newer models of the Camry, Tacoma, Land Cruiser, 4Runner, Sienna, Sequoia, & BZ4X.



Harness 10B

The included 10-Pin harness is for rearview mirror installation only. It can be used in newer models of Toyota and Lexus.

SELECTING YOUR WIRING HARNESS

MODEL	YEAR	HARNESS
Tacoma	2024+	Harness 5A
Tundra	2022+	
4Runner	2025+	
Land Cruiser	2024+	
Sequoia	2022+	
Sienna	2025+	
Lexus GX550	2024+	
Camry	2021+	Harness 5C
All other models with Homelink but not listed		Harness 10B

INSTALLATION INSTRUCTIONS

DETERMINING YOUR INSTALLATION METHOD

If your vehicle is compatible with Harness 5A or 5C, we recommend using the 5-Pin harness with a dome light cavity installation.

Please Note: These harnesses are nearly identical and are labeled to help you determine which to use: 5A harness is labeled "3-pin harness 5A" and 5C harness is labeled "3-pin harness 5B."

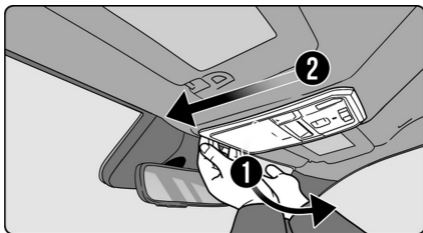
If your vehicle is only compatible with the Harness 10B, you will need to install the Dongar PRO through your rearview mirror.

TIP:

Always turn your vehicle off before beginning installation.

Dome light cavity installation:

1. Remove the dome light assembly by placing your fingers at the front of the assembly (closer to windshield) and gently pulling down. The dome light is located in the ceiling of the driver/passenger row toward the front of your vehicle.



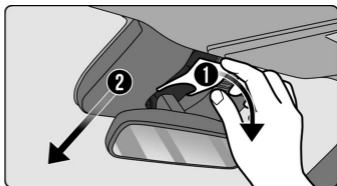
2. Locate the 5-pin connector port within the dome light cavity and connect the 5-Pin PRO harness to it. Route the 3-pin end of the same harness through the headliner.

3. Connect the 3-pin head to the Dongar PRO USB module and plug your dash cam into the USB-C port. Turn [ON] your vehicle and ensure the dash cam is receiving power.

4. Once you have confirmed the dash cam is receiving power, mount the dash cam and PRO adapter on a clean spot on the windshield and re-assemble the plastic shroud.

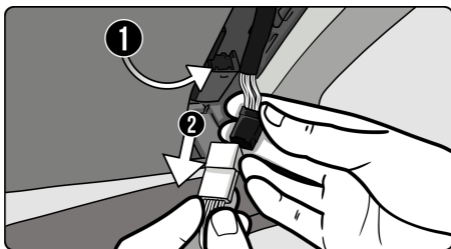
Rearview mirror installation for shrouded mirrors:

1. Tilt your mirror down for easier access to the shroud. To remove the shroud, place your fingers between the headliner and smaller panel piece and pull straight down. The larger panel can be removed by sliding it down and away from you.



2. Locate and unclip the mirror's connector. Then, plug the matching male end of the 10-Pin PRO wiring harness into the mirror's female port.

[NOTE: Most Toyotas have a 12-Pin Safety Sense Connector that can easily be confused with your rearview mirror connection. **DO NOT UNPLUG THIS.** Instead, search for the additional 10-Pin connector under your plastic shroud].



3. Plug the male end of the original mirror connector into the female end of the PRO harness. Plug the smaller 3-pin head into the PRO USB module.

4. Connect your dash cam to the USB-C port on the PRO module. Turn [ON] your vehicle and ensure the dash cam is receiving power. Once you have confirmed the dash cam is receiving power, mount the dash cam and PRO adapter on a clean spot on the windshield.

5. Route the cables accordingly and re-assemble the plastic shroud.

To view these instructions online,
scan the QR code below:



If you need more help installing your *Dongar PRO*,
visit www.dongar.tech/INSTALL

STANDARD 3-YEAR MANUFACTURER WARRANTY

The manufacturer warrants this product to be free from defects in workmanship and materials for all new purchases from authorized dealers under normal residential use and conditions for a period of three(3) years from the original invoice date. Shipping and handling fees are to be paid for by the customer. The manufacturer agrees, at its option during the warranty period, to repair a defect in material or workmanship or to furnish a repaired or refurbished product of equal value in exchange without charge (except for a fee for shipping, handling, packing, return postage, and insurance which will be incurred by the customer). Such repair or replacement is subject to verification of the defect or malfunction and proof of purchase as confirmed by showing the model number on original dated sales receipt. This warranty applies only to new purchases from authorized dealers.