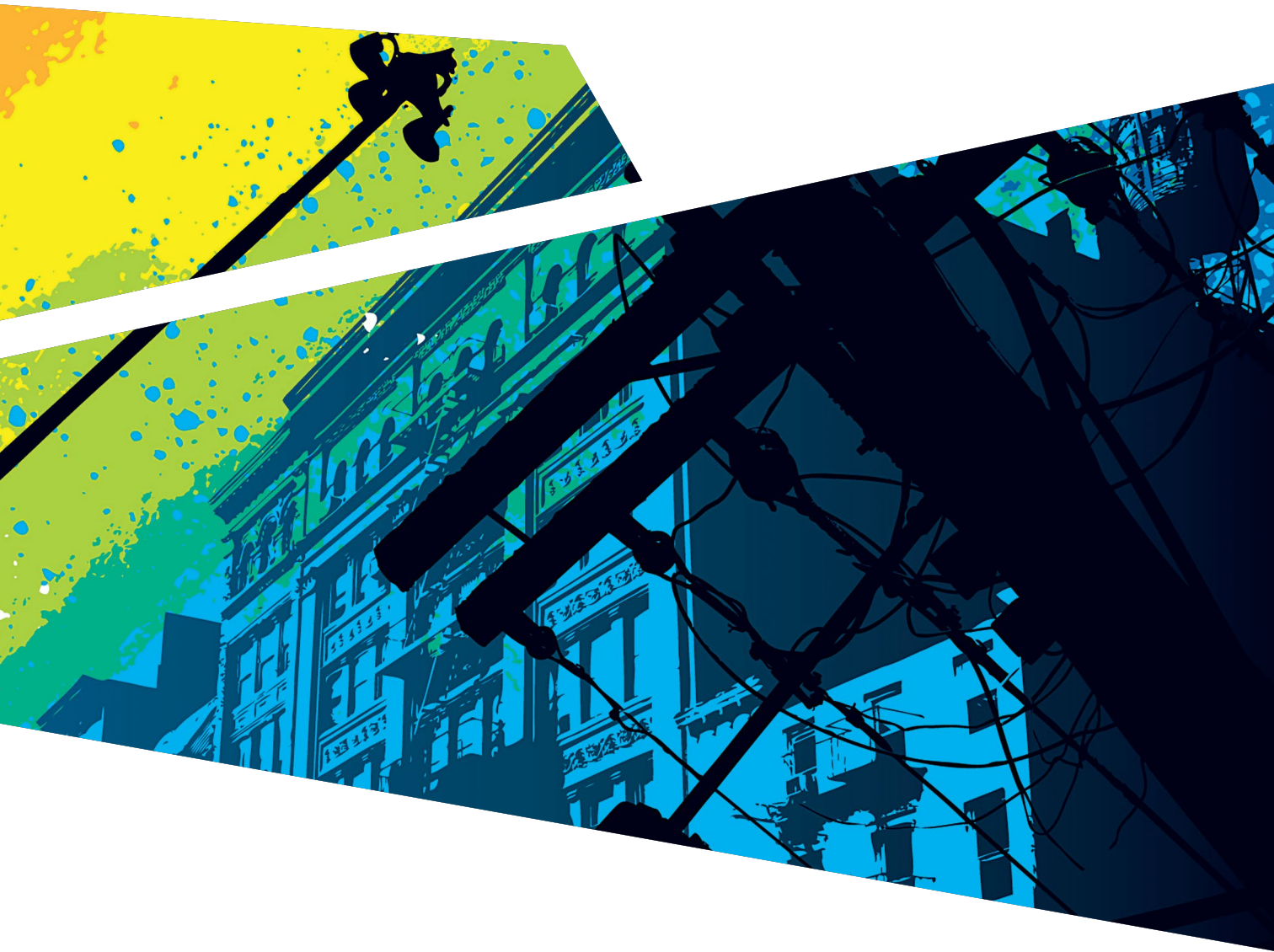




PRESSGLASS

LEADING IN EUROPE



DIGITAL PRINT

ON GLASS

www.pressglass.com

ON GLASS
DIGITAL PRINT

Now only the idea, camera and graphic creation software is needed. DIGITAL PRINT will realize the work by printing it on the glass.

Digital print on glass by DIGITAL PRINT brings the colourful world of photographs and computer graphics - previously available only in paper and film print - directly to building constructions. Now, thanks to ceramic paints, heated during the toughening process, a graphic can become a weatherproof and

vandal resistant part of a glass structure. Due to using the same print method as used in computer printers, DIGITAL PRINT is extremely fast and does not require any additional work except for processing the graphic file. As it is not necessary to prepare printing screens, even unique patterns remain cost-effective.

Use of six basic colours guarantees a photo-quality print at 360 dpi resolution. Thanks to software which allows dividing the overprint graphic into adjacent glass panes, large format photographs covering a glass façade surface can be obtained.





THREE STEPS TO GET A READY PRODUCT

- PRODUCTION PROCESS

- testing and processing a file to DIGITAL PRINT requirements
- overprint
- heating and toughening

ADVANTAGES OF DIGITAL PRINT

- unlimited capability of multicolour print of graphics and photographs
- photo-quality colours
- resolution 360 dpi
- direct print on the glass without any preparatory work
- capability and profitability of making a single glass pane with an individual overprint
- glass toughened with DIGITAL PRINT is safe for the user according to EN 12600 and has a higher resistance to cracking caused by thermal tensions

INSTRUCTIONS FOR CLIENTS

Recommended formats of graphic files are PDF, PS, EPS, DXF, DWG, DWF, TIFF, BMP, and JPEG.

The maximum size of the overprint depends on the quality of the graphic material. A print size of 72 dpi resolution minimum is recommended.

PRINT SIZE

Thickness of glass [mm]	Minimum size of a pane [mm]	Maximum size of a pane [mm]
4	100 x 250	1700 x 2500
5	100 x 250	2000 x 3000
6-19	100 x 250	3200 x 7000

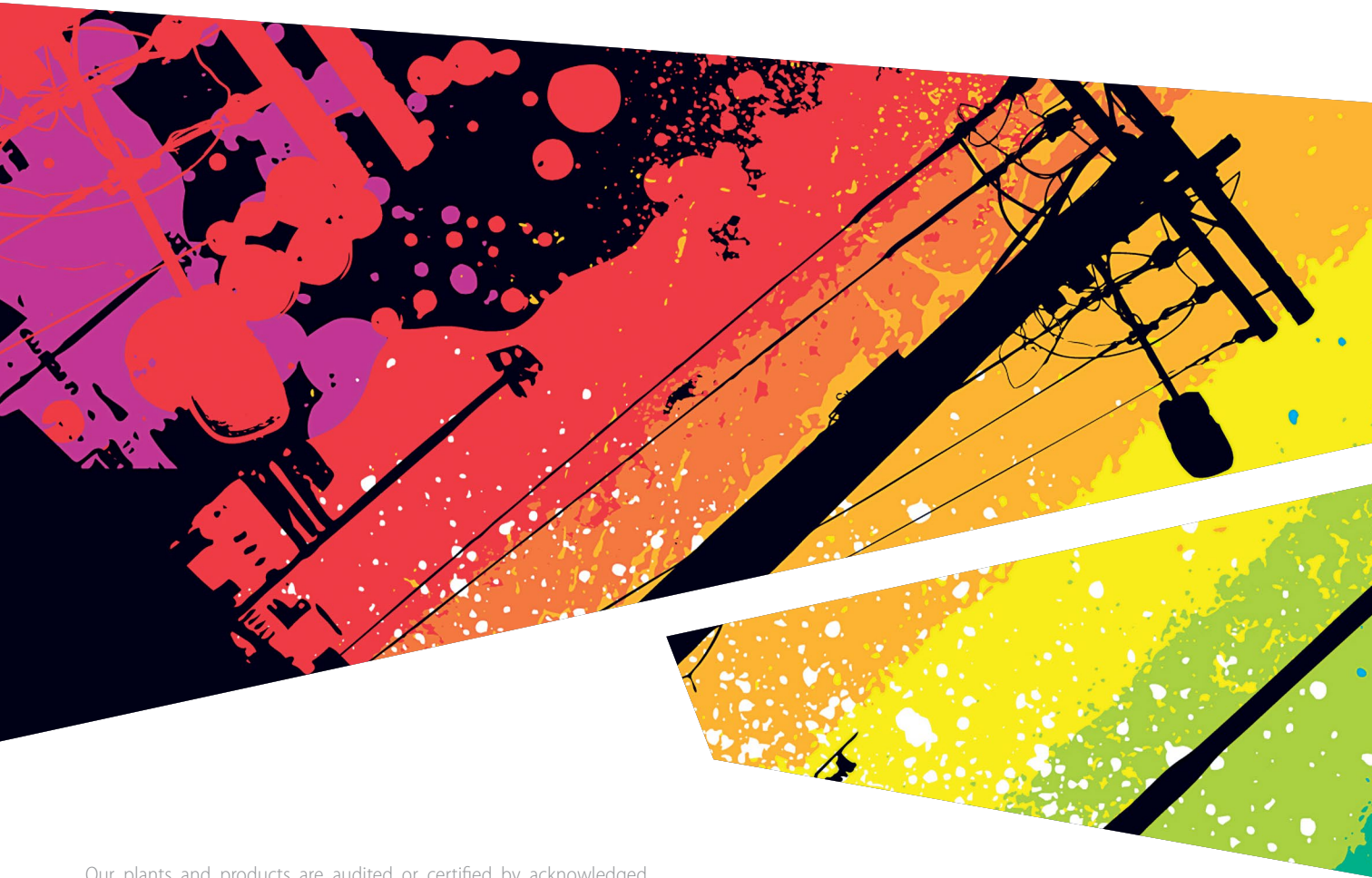


Paper has always been and will always be a vital aspect of project and marketing activities. The selection of paper produced in accordance with sustainable development and environmental protection (FSC certificates) and/or recycled paper is becoming a key issue.



We constantly modify our manufacturing processes and change habits to limit the negative effect on the environment. In order to facilitate the changes, we have adopted ISO 14001, the worldwide management system for environmental protection.

We kindly request you to minimize the negative effect of this leaflet on the environment by using it multiple times. Please recycle the used leaflet, using the waste sorting method. Thanks to that, the materials can be used again.



Our plants and products are audited or certified by acknowledged certification bodies, including:

BCCA, BSI, CQC, ICiMB, IFT, IGMA, KIWA, RISE, UKAS and WarringtonFire.

We make every effort to ensure that presented publication contained current information as of the date of print. Due to the continuous development of our product range may differ from market to market. Product's availability should always be confirmed with Sales Department.

